



2026

تكنوستيل للإنشاءات ذ.م.م

SINCE 1992

TECHNOSTEEL CONSTRUCTION L.L.C.

TECHNOSTEEL CONSTRUCTION L.L.C



“Your reliable partner in STEEL CONSTRUCTION since 1992”

P.O. Box 21687, Dubai, United Arab Emirates

Tel. No. : +97148015400 / Fax. No. : +97148830408

E-mail: tsc@technosteel-uae.com / Website: www.technosteelconstruction-uae.com

CONTENTS

SN	DESCRIPTION
I	COMPANY PROFILE
II	INTRODUCTION
III	CONSTRUCTION & SERVICES
IV	SPECIALIZATION
V	AREA OF EXPERTISE AND CORE VALUE
VI	QUALITY
VII	ISO CERTIFICATIONS
VIII	LICENSES & CERTIFICATION
IX	MEMBERSHIP & EVALUATION
X	QHSE POLICY
XI	COMPANY ORGANOGRAM
XII	TECHNICAL & SUPPORTING TEAM
XIII	PROJECTS EXECUTION FACILITIES
	- DESIGN AND ENGINEERING
	- FABRICATION
	- QHSE
	- PROJECT MANAGEMENT
	- ERECTION
XIV	PROJECT EXHIBIT
	- ROOF FEATURES AND MAJOR PROJECTS
	- COMPOSITE STEEL & SHORING STRUTS
	- SPACE FRAMES
	- SPECIAL PROJECTS
	- LINK BRIDGES
	- STAIRCASES
	- CANOPIES
	- SKYLIGHTS
	- WAREHOUSES / FACTORIES
	- SHOWROOMS
	- SPORTS AND RECREATION
	- METRO RAILWAYS / STATIONS
	- VILLAS, RESIDENTIAL & COMMERCIAL BLDG
	- PETROL STATIONS
	- MISCELLANEOUS
	- INVOLVEMENT IN EXPO 2020 PROJECTS
XV	PREVIOUS APPROVAL FROM CONSULTANT
XVI	LIST OF CLIENTS
XVII	CLOSING REMARKS

COMPANY PROFILE

COMPANY NAME : TECHNOSTEEL CONSTRUCTION L.L.C

LICENSE NO : 228408

ESTABLISHMENT : 1992

CONTACT DETAILS : Tel No. : 04-8015400

Fax No. : 04-8830408

E-mail Add. : tsc@technosteel-uae.com
estimation@technosteel-uae.com

Website: : www.technosteelconstruction-uae.com

COMPANY ADDRESS : Jebel Ali Industrial Area, Lehabab Road, Dubai UAE

P. O. BOX : 21687, Dubai UAE

SCOPE OF ACTIVITIES : ➤ Building Contracting

➤ Steel Constructions Contracting

➤ Bridges and Dams Contracting

➤ Metal Products Coating

➤ Road Contracting

➤ Glass & Aluminum Installation & Maintenance

➤ Electrical Fitting Contracting

➤ Plumbing & Sanitary Installation

➤ Fire Retardant Lining Materials Installation

INTRODUCTION

34 years

تكنوسٲيل للإنشاءات ذ. م. م.



TECHNOSTEEL CONSTRUCTION L.L.C.

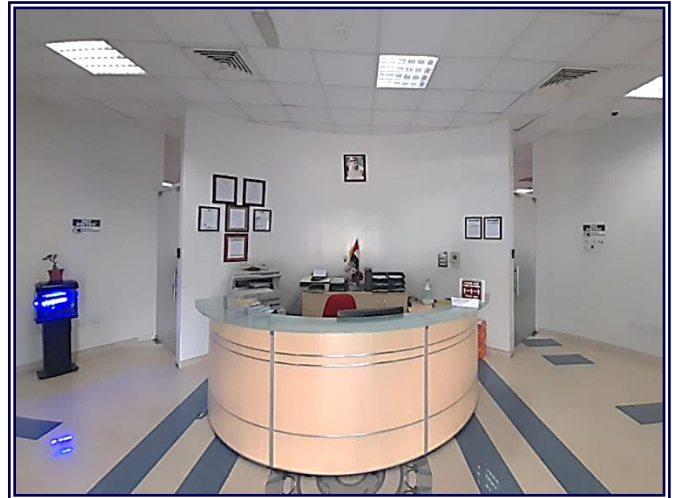


Technosteel Construction L.L.C (“TSC”) is one of the UAE’s leading companies in the field of structural steel & architectural steel of any size in **design, engineering, fabrication, painting and erection** of all types of steel projects.

Technosteel Construction L.L.C was established in 1992 and within 33 years have grown steadily in the field of structural steel works.

Technosteel Construction L.L.C has in-house CNC-based manufacturing facility, highly qualified project management, field erection and installation team.

Compliance to ISO 9001:2015; ISO 14001:2015; and ISO 45001:2018 ; Active member in Steel Construction Institute(SCI) and D & B Rating Certificate



CONSTRUCTION & SERVICES

Technosteel Construction L.L.C aims to provide a complete, integrated solution for customers including site installation and services. Techno Steel employ a highly qualified construction team, and can provide construction equipment capable of installing 2,000 tons of steel per month.

Technosteel Construction L.L.C is a well reputed company in the field of general contracting, accredited by numerous government bureaus and qualified in steel design, fabrication & erection activities.



Manpower Strength is totaling around 1200 Nos. and equipped with a long fleet of site construction equipments, cranes, lifting and access equipments and scaffolding.

Hereby offering clients very competitive prices for complete package of supply and erection.

SPECIALIZATION

STRUCTURAL STEEL

Technosteel Construction L.L.C expertise with the steel structural works has been proven in different field of structural works which stands as the backbone of a project, TSC's experience molded them as one of the industry's leading structural steel contractor.

When it comes to structural steel TSC's engineers have a wealth of expertise from its design, engineering, coordination, fabrication, protection coating, installation and inspection.

SECONDARY STEEL

Technosteel Construction L.L.C understands the importance of the effective application of knowledge and experience to all projects. It is TSC's belief that secondary steel is of crucial importance to all projects.

As the steel that interconnects the main pieces of the structure, secondary steel is crucial to turning a series of steel pieces into a complete fully functioning structure that also interconnects to other coordinating trade of works. As such it must be treated with the utmost respect and care to ensure that all structures are successfully completed on programme and to budget.

ARCHITECTURAL STEEL

Technosteel Construction L.L.C has the ability to effectively combine the fields of architecture and engineering through the experience and expertise of our Engineers. Complex in nature architectural steel is well understood at TSC and its Engineers have the ability to complete these complex projects on time and to the highest standards while incorporating the artistic qualities associated with architecture.

The sophisticated 3D modeling techniques effectively convert what the Architects and Engineers envisage into buildable pieces and connectors. Once modeled, TSC Production Engineers have the ability to create architectural pieces of great complexity in short periods of time with exceptional quality. Creating artistic architectural features is a passion that is shared by all employees within TSC and this passion ensures that all the architectural steel projects are completed with the greatest care and to the highest quality standards.



AREA OF EXPERTISE & CORE VALUE

AREA OF EXPERTISE

Technosteel Construction L.L.C specializes in the following:

Design, engineering, fabrication, blasting, painting, supply and erection of Structural & Architectural Steel projects, including special steel works like heavy plate built up girders, beam bending, plate rolling and heavy columns and specialized welding, trusses, crane girders, space frames, roof features, canopies, warehouses, industrial buildings, shopping malls, bridges & etc.

Technosteel Construction L.L.C provide services for the following sectors:

- ❖ HIGH-RISE BUILDINGS
- ❖ RETAIL & COMMERCIAL
- ❖ BRIDGES
- ❖ EXHIBITION / FIT-OUT PACKAGES
- ❖ INDUSTRIAL BUILDINGS
- ❖ STADIUMS & SPORTS COMPLEX
- ❖ OIL,GAS, PETROCHEMICALS & PETROL STATIONS
- ❖ INFRASTRUCTURE

CORE VALUE

- ✓ Compliance to **safety**
- ✓ Conformance to **quality**
- ✓ Adherence to **schedule**
- ✓ Consistent client **satisfaction**

QUALITY

VISION

Technosteel Construction L.L.C continues to move forward in becoming the leading Engineering and Construction firm in Middle East and North Africa (MENA) to consistently delivering projects that meet international standards.

MISSION

Technosteel Construction L.L.C is committed to building long-term relationships based on integrity, performance, value and client satisfaction. We will continue to meet the changing needs of our clients with our quality services delivered by the most qualified people and latest technologies.

POLICY

To realize our vision and mission **Technosteel Construction L.L.C** exert every effort to achieve our goals & objectives.

This Policy provides the framework and sets the basis for establishing and reviewing our objectives at the relevant functions of **Technosteel Construction L.L.C**. It will be reviewed periodically for continuing stability and suitability.

ISO CERTIFICATIONS



ISO 9001:2015



ISO 14001:2015



ISO 45001:2018

CERTIFICATIONS

9/25/25, 11:55 AM

Roads & Transport Authority



Prequalification Certificate

Company: **TECHNOSTEEL CONSTRUCTION L.L.C**

Reg#:

A010-0156295

Type: Contractor
Address: Jebel Ali Industrial Area 2
Telephone: 048015400
Fax: 048830408

Further to your request for prequalification, we are hereby pleased to advise you that your application has been successfully considered and your company is approved for RTA Projects as per the following activities:

Agency/Sector	Department	Main Categorization	Work Scope	Value Limit (AED)	Status	Expiry Date	Other Conditions	Green Procurement	HSE
Traffic & Roads Agency	Roads	Infrastructure-Roads	Foot Bridges Works	30,000,000	Prequalified	25 Sep 28	Key Required Documents are not uploaded, ISO Certificate is expired	Non Compliant	Comply - 85%
Corporate Administration Support Services Sector	Buildings & Facilities	Engineering-Buildings and Facilities	Building Contracting	20,000,000	Prequalified	14 Jul 28	To verify the expiration date of a trade license.	Comply - 80%	Comply - 89%
Corporate Administration Support Services Sector	Buildings & Facilities	Engineering-Buildings and Facilities	Steel Works Construction	10,000,000	Prequalified	14 Jul 28	To verify the expiration date of a trade license.	Comply - 61%	Comply - 91%

Printed On 9/25/2025

Please Note

The above approval is for the above period, renewable according to request and successful review process by RTA, and is conditional upon your reasonable participation in RTA tenders and projects. We reserve the right to withdraw same at our sole discretion at any time. This Certificate is issued by the Roads and Transport Authority (RTA) and does not require stamping or signature

Note: Non Compliance with Green Procurement will effect your participation in RTA tenders

Tel: +971 4 284 4444 Fax: +9714 206 5555 P.O.Box 118899, Dubai, UAE. www.rta.ae

**RTA PREQUALIFIED CONTRACTOR
(BRIDGES, BUILDING
CONTRACTING & STEEL WORKS
CONSTRUCTION)**

QHSE POLICY

تكوستيل للإنشاءات ذ. م.



TECHNOSTEEL CONSTRUCTION L.L.C.

HEALTH, SAFETY & ENVIRONMENT POLICY

We, at TECHNO STEEL CONSTRUCTION L.L.C., are seriously committed towards strict implementation and continual improvement of Health Safety and Environment Procedures within our organization.

We substantiate our belief that "SAFETY is as important as Quality and Output".

- We establish, maintain, and implement HSE Management System and Procedures which comply with applicable Legal Requirements, relevant HSE Standards and other Statutory Requirements to which the organization subscribes.
- We ensure our services meet or exceed Clients' requirements and expectations while complying with agreed schedules and in adherence to HSE Management System and Procedures.
- We set and periodically review HSE Objectives, Policy, Management Programs, and Procedures to ensure suitability, adequacy and effectiveness of HSE Management System.
- We ensure safety and welfare of our employees by ensuring that everybody is aware of their individual HSE obligations.
- We strive to prevent any incident, occupational illness or exposures which could cause harm to people or damage to properties by identifying hazards and their related risks; and by establishing Risk Assessment and Emergency Plans to reduce adverse effects.
- We set HSE as part of our responsibility and accountability.
- We strive to achieve continual improvement of our HSE Management System and related performance that also embrace benefit of external parties.

Top Management is dedicated in promoting, implementing and communicating HSE Policy in order to achieve organization's ultimate goal of: "ZERO INCIDENT".

All required resources and training will be identified and provided to ensure continual improvement of HSE Performance.

Managing Director

Date: February 17, 2019

TS-HSE-POLICY-01

HEALTH, SAFETY & ENVIRONMENT POLICY

QUALITY POLICY

تكوستيل للإنشاءات ذ. م.



TECHNOSTEEL CONSTRUCTION L.L.C.

QUALITY POLICY

TECHNOSTEEL CONSTRUCTION L.L.C., engaged in contracting of civil works, steel construction, fabrication, erection and galvanizing always strive to be globally committed to provide superior quality as well as satisfying the requirements of interested parties on agreed specifications by determining their needs & expectations and to do so on time at competitive process.

Our commitment also aimed to continually improve our organization by providing quality and safety objectives for all the functions and implementing them to comply with the applicable statutory and regulatory requirements.

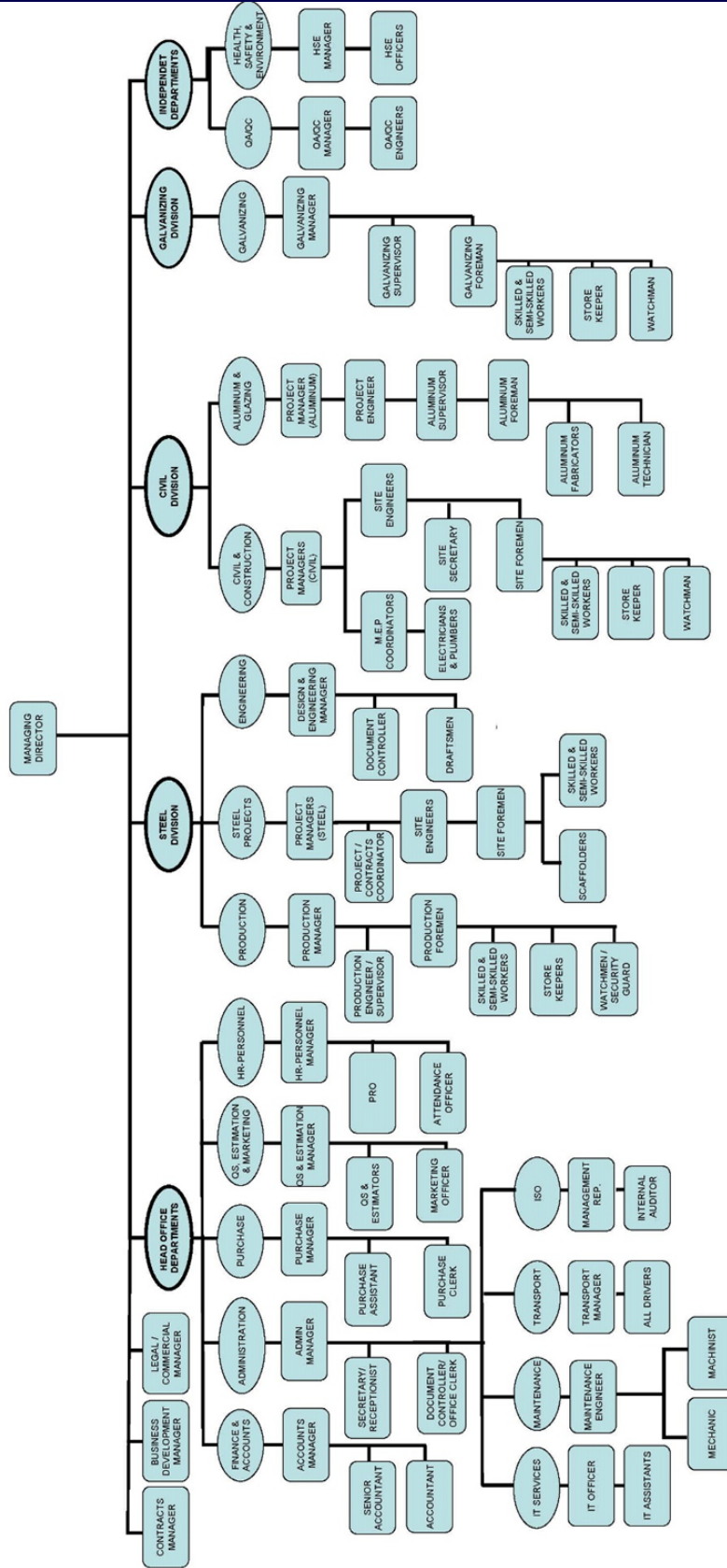
This shall be achieved by total commitment of all the employees at every stage of the process throughout in accomplishing the tasks in line with the requirements of ISO 9001:2015.

Managing Director

Date: 20 April 2021

COMPANY ORGANOGRAM

TECHNOSTEEL CONSTRUCTION LLC ORGANIZATIONAL CHART



ISSUED BY : Jane S. Baltazar

REVIEWED & APPROVED BY : Mr. K.Khorram

Reference : Annexure A, Issue No. 07, Date : 28-08-2024

TECHNICAL & SUPPORTING TEAM



DESIGN & ENGINEERING DEPARTMENT

Structural designers
Detailers
Nesting detailer for CNC plate cut

FABRICATION & FINISHING DEPARTMENT

Production Manager
Process Engineers
Fabrication Supervisors
Production Planning Coordinators
Machine Operators
Fabricators, Welders, & Workers
Blasting & Painting Workers
Painting Supervisor

PROJECT MANAGEMENT DEPARTMENT

Contracts Manager
Project Control Managers
Project Engineers
Project Coordinator
Project Planning Engineers

ERECTION DEPARTMENT

Erection/Site Engineers
Supervisor/Foremen
Skilled Erectors & Helpers

SURVEY DEPARTMENT

Land Surveyors
Chain Man



PROCUREMENT DEPARTMENT

Purchasing Officers

QHSE DEPARTMENT

Quality Assurance Engineers
Quality Control Officers
Welding Engineer
Third Party NDT services.
HSE Engineers & Officers

LOGISTICS / MAINTENANCE DEPARTMENT

Maintenance Manager
Mechanics

Transportation Manager

STORES DEPARTMENT

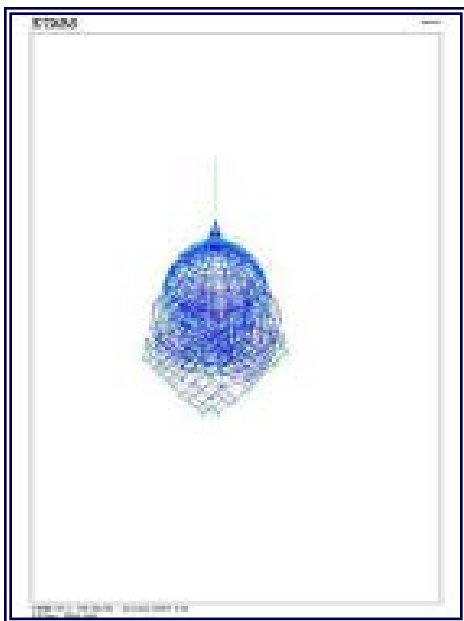
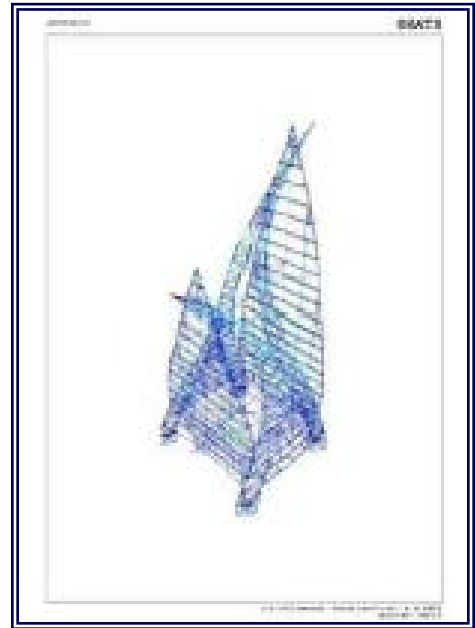
Store Chief Controller
Assistants

PROJECTS EXECUTION FACILITIES

DESIGN & ENGINEERING

Technosteel Construction L.L.C
Design and Engineering Team execute Construction and assembly drawings detailing.

Also, composing coordinated general-arrangement drawings and foundation details shop drawings.



TSC Design and Engineering team also produces Material quantity take-off for each project.

The Technical office is also fully computerized and utilizes softwares to carry-out each project successfully.

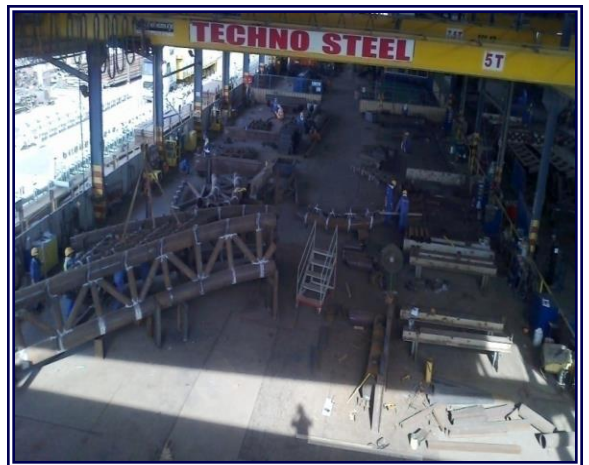
PROJECTS EXECUTION FACILITIES

FABRICATION

Technosteel Construction L.L.C., having fully equipped with modern facilities full fledged Production capacity of up to 1200MT per month

Using Latest in CAD/CAM software and CNC manufacturing.

Having various production lines at different bays like prefabrication, assembly, welding, rolling, shearing grinding and state-of-the art equipments.



PROJECTS EXECUTION FACILITIES

FABRICATION



CNC AUTOMATED



ROLLING MACHINE



RADIAL DRILLING



SHEARING MACHINE



LATHE MACHINE

PROJECTS EXECUTION FACILITIES

FABRICATION



CNC SAWING & DRILLING MACHINE



SUB ARC AUTOMATIC WELDING M/C



PUNCHING, SHEARING & NOTCHING



MOBILE CRANE, FORKLIFTS

PROJECTS EXECUTION FACILITIES

FABRICATION

HEAVY STRUCTURE FABRICATION



3D PIPE STRUCTURES



TRUSSES FABRICATIONS



BUILT UP ASSEMBLY

PROJECTS EXECUTION FACILITIES

QUALITY, HEALTH, SAFETY & ENVIRONMENT

Meeting the essential requirement of ISO 9001:2015; ISO14001:2015 and ISO 45001:2018

Technosteel Construction L.L.C has established and implemented ISO based procedures and has a complete ISO compliant QA Manual that includes all the procedures by strictly complying with relevant technical standards as per client specifications.

For further comprehensive details you may refer to TSC QHSE PLAN and associated procedures performed in every department and stages



Complying with applicable HSE regulatory requirements at each location.

Technosteel Construction L.L.C has proven its compliance to all the safety rules for each project by being named as **SAFE CONTRACTOR**

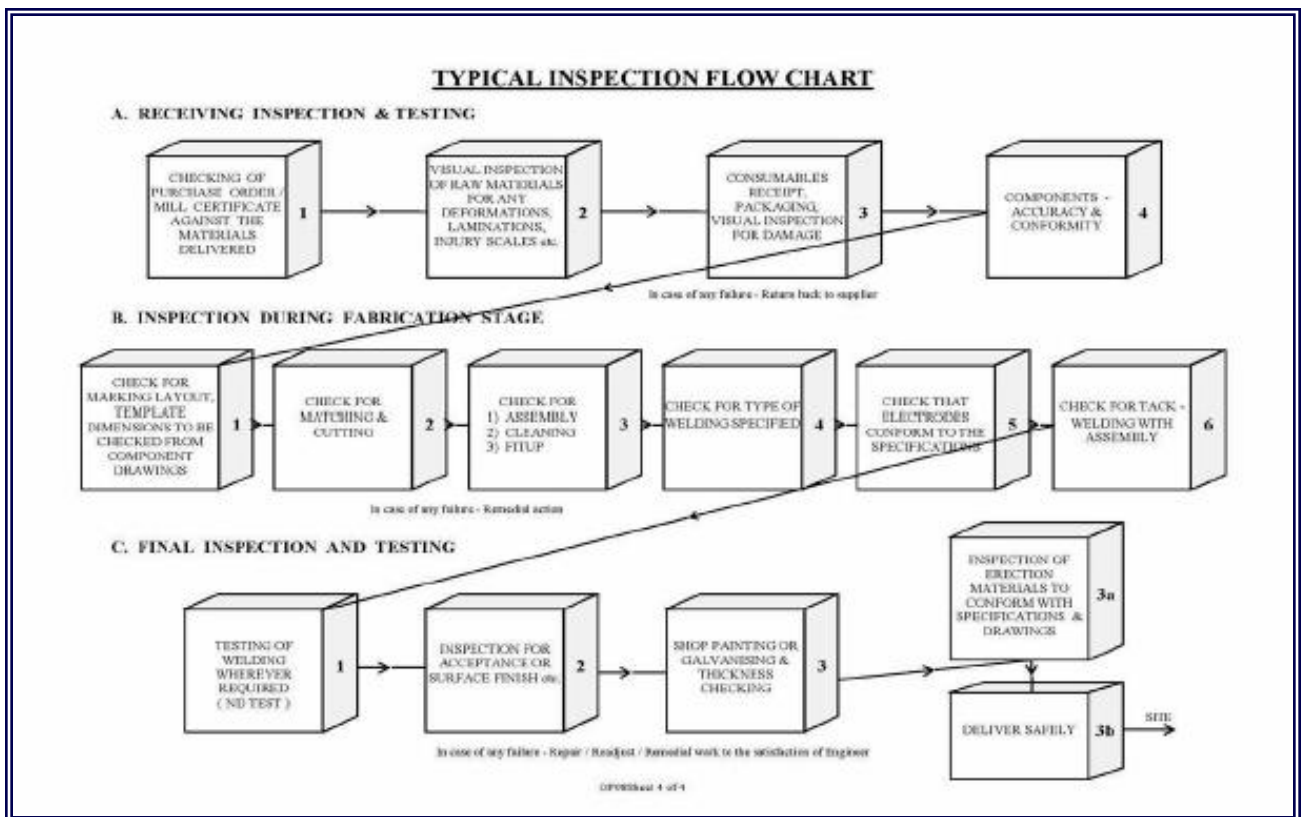
Auditing QHSE activities at regular intervals at each facility to monitor its effective implementation and to take corrective actions, wherever required.

Create a proactive HSE culture through awareness, training and motivation to achieve continual improvement in HSE performance.

PROJECTS EXECUTION FACILITIES

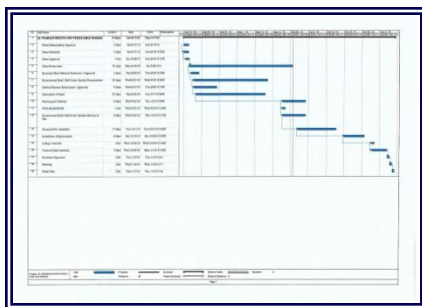
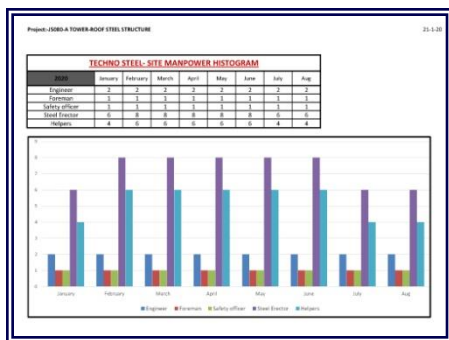
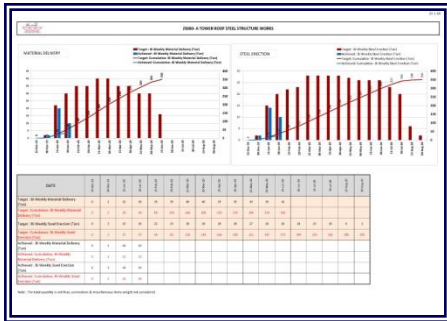
QUALITY, HEALTH, SAFETY & ENVIRONMENT

QUALITY INSPECTION FLOW CHART



PROJECTS EXECUTION FACILITIES

PROJECT MANAGEMENT



In **Technosteel Construction L.L.C**, a dedicated project manager is assigned as a single point of contact for the client. Their job is to ensure information flow between all parties, coordinate with departments within the organization, monitor design, drawing & detailing, production, erection up to completion on site as per defined contractual scope of works and following responsibilities but not limited to:

Preparation of project management plan which contains:

- Integration with customers, all internal functional departments and subcontractors (if any)
- Submission of Baseline work program and monitoring & controlling of any variances against as planned performance.
- Submission of construction sequence and erection methodology by assessing all respective conditions.
- Submittals of technical documents like Quality Plan, ITP, HSE Plan, steel, bolts, painting materials, lift plan & etc...
- Submission of detailed resources histograms for site equipments, manpower and availabilities for each phases.
- Monitoring & controlling the everyday project activities and progress at site by ensuring that no factors affects the construction program unless otherwise if any reasonable changes sustains.
- Attending weekly site progress meetings with the stakeholders meeting their day to day requirements and submission of weekly progress & status reports.

Managing all Planning, monitoring & controlling of everyday operations (executions) by integrating and communicating with each stakeholders meeting their expectations by taking all proactive steps.

PROJECTS EXECUTION FACILITIES

SITE ERECTION



Technosteel Construction L.L.C have dedicated & experienced erection field team consisting of supervisors & erectors to perform all site related activities on daily basis.

Prior proceeding to any erection activities TSC assess all influencing factors such as crane location, lifting capacity, site access, storage and structure suitability, transportation to & from fabrication facilities.

Following are general erection sequence that will be followed:

- As built survey (in case if required)
- Erection of temporary members & scaffolding components
- Assembly of permanent members
- Erection of permanent members
- Stabilizing by providing appropriate steel supports.
- Leveling, Aligning by surveying
- Erecting secondary steel & associated members
- Welding / bolting of main and infill members
- De-propping



PROJECTS EXHIBIT

AIRE DUBAI



Project Details :

Project	:	AIRE DUBAI
Scope	:	Engineering, Fabrication & Erection Composite Columns Standard @ BUS), Spandrel Beams, Outrigger, Roof Feature (from basement up to Roof)
Client	:	M/s ALTA Development
Consultant	:	M/s LACASA Consultants & Architects
Contractor	:	M/s Dubai Dawn Distinguished Construction

PROJECTS EXHIBIT

DIFC - CP02



Project Details :

Project	:	CP02
Scope	:	Engineering, Fabrication & Erection of Built up Composite Columns and Beams
Client	:	M/s DIFC
Consultant	:	M/s LACASA
Contractor	:	M/s Ali & Sons Contracting

PROJECTS EXHIBIT

PENINSULA TOWER – PLOT F



Project Details :

Project	:	Peninsula Plot F
Scope	:	Design, Engineering, Fabrication & Erection Composite Columns, Outrigger, Roof Feature & Sail Structure
Client	:	M/s Select Group
Consultant	:	M/s Dubai Consultant
Contractor	:	M/s Al Basti & Muktha

PROJECTS EXHIBIT

TRIA BY DEYAAR

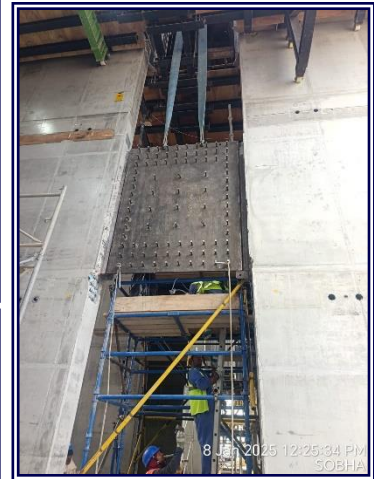
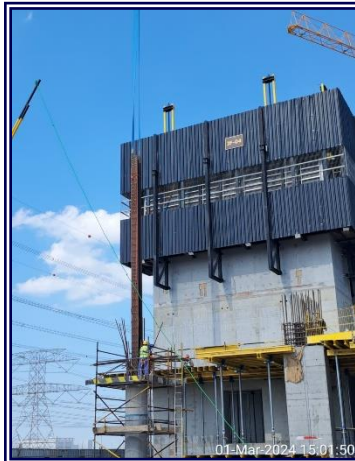


Project Details :

Project	:	Tria by Deyaar
Scope	:	Engineering, Fabrication & Erection of Composite Beam
Client	:	M/s Deyaar
Consultant	:	M/s NEB
Contractor	:	M/s Naresco Contracting

PROJECTS EXHIBIT

CREEK VISTA HEIGHT

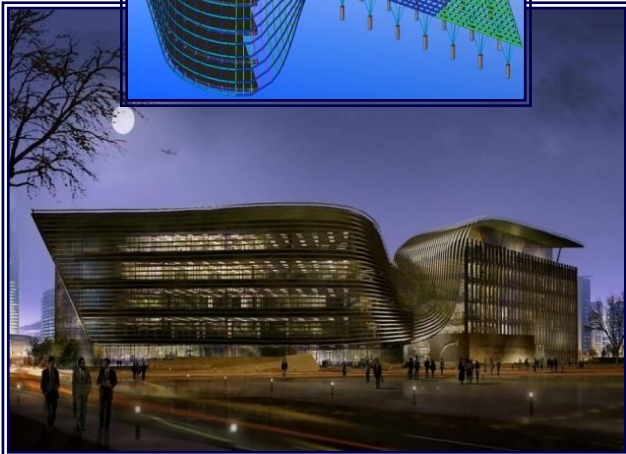
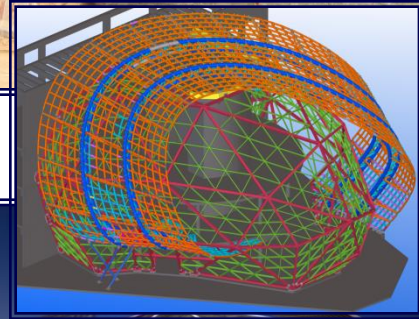
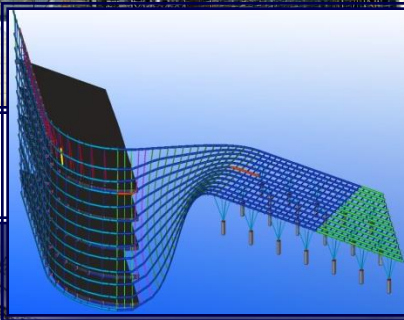
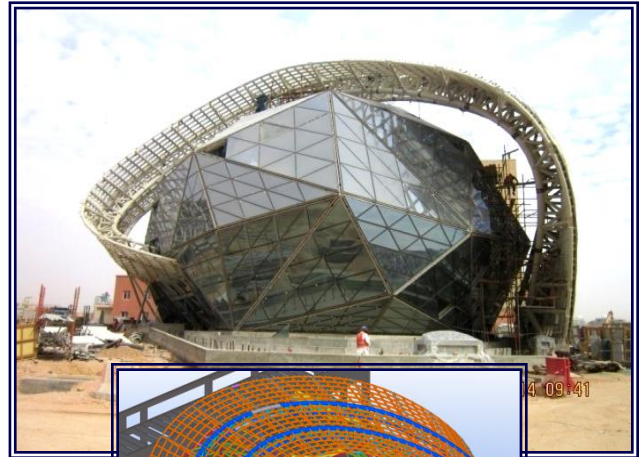


Project Details :

Project	:	Creek Vistas Heights (CVH)
Scope	:	Engineering, Fabrication & Erection Composite Items
Client	:	M/s Sobha
Consultant	:	M/s PNC
Contractor	:	M/s Sobha Constructions

PROJECTS EXHIBIT

COMMUNICATION COMPLEX

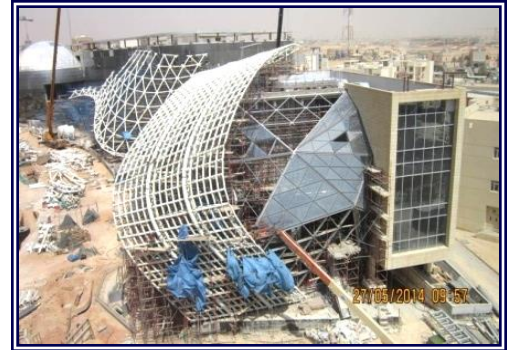
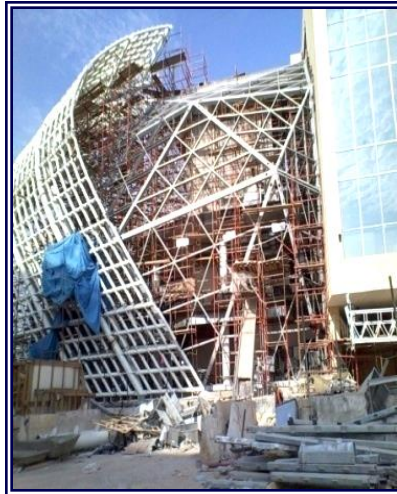
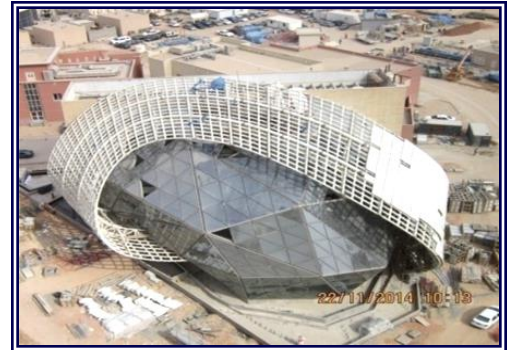
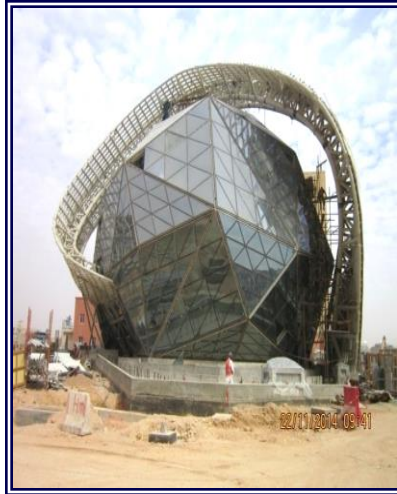
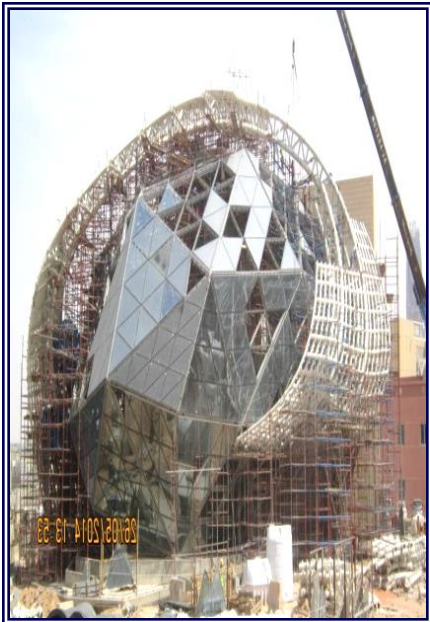


Project Details :

Project	: Communication Complex Riyadh, KSA
Scope	: Design, Detailing, and Fabrication of 600+ MT of Architectural Steel & Glazing Supports
Client	: M/s Riyadh Investment Company
Consultant	: M/s Zuhair Fawaz Partnership Consultant
Contractor	: M/s Al Ghurair Construction

PROJECTS EXHIBIT

COMMUNICATION COMPLEX

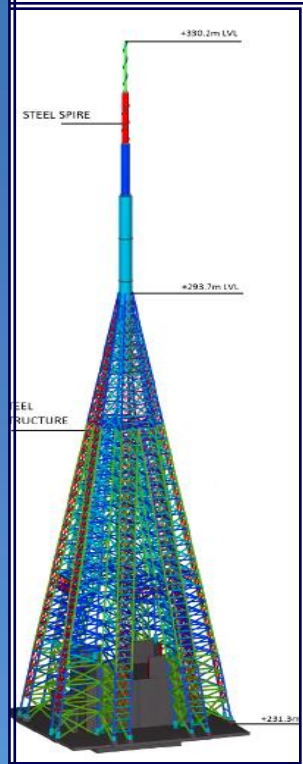


Project Details :

Project	: Communication Complex Riyadh, KSA
Scope	: Design, Detailing, and Fabrication of 600+ MT of Architectural Steel & Glazing Supports
Client	: M/s Riyadh Investment Company
Consultant	: M/s Zuhair Fawaz Partnership Consultant
Contractor	: M/s Al Ghurair Construction

PROJECTS EXHIBIT

A - TOWER



Project Details :

Project	: A-Tower, Dubai UAE (Biggest A Letter in the World)
Scope	: Design, Detailing, Fabrication & Erection of 500+ MT of Architectural Steel
Client	: M/s AMA Holding
Consultant	: M/s National Engineering Bureau
Contractor	: M/s Engineering Construction and Reconstruction Company LLC

PROJECTS EXHIBIT

HILTON GARDEN & HOLIDAY INN

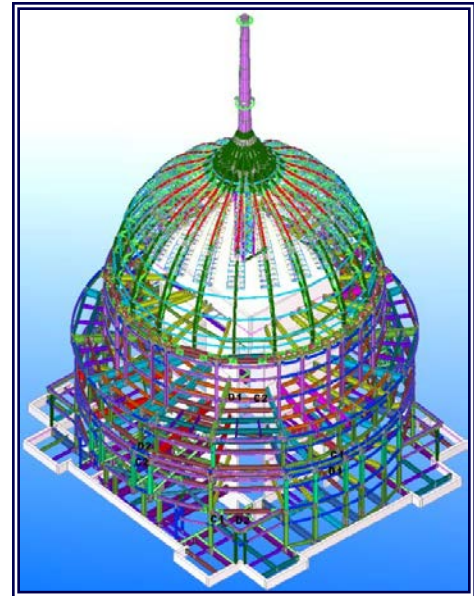
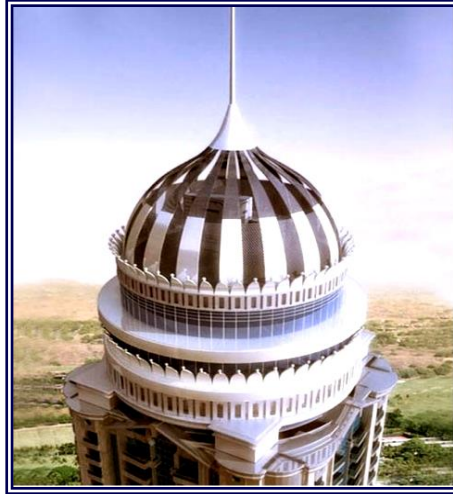


Project Details :

Project	:	Hilton Garden & Holiday Inn
Scope	:	Design, Detailing, Fabrication & Erection of Steel Structure at Roof
Client	:	M/s Kingston Holding International
Consultant	:	M/s Canadian Consultant
Contractor	:	M/s Gulf Asia Contracting

PROJECTS EXHIBIT

PRINCESS TOWER



Project Details :

Project	: Princess Tower, Dubai, UAE (5 th Tallest Residential Building in the World)
Scope	: Design, Detailing, Fabrication & Erection of 1100+ MT of Structural, Architectural Steel & Floor Decking
Client	: M/S Tameer Holding Investments
Consultant	: M/S Adnan Saffarini
Contractor	: M/S Arabian Construction Co.

PROJECTS EXHIBIT

WOW HOTEL

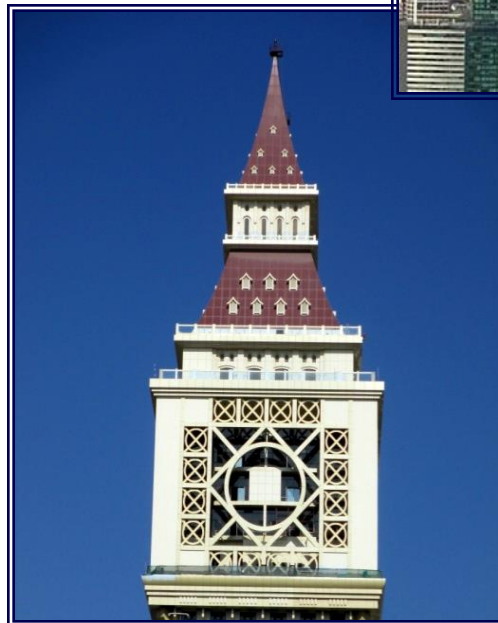
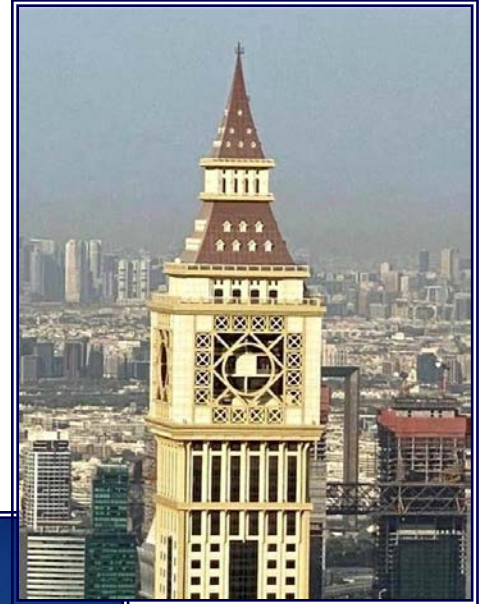


Project Details :

Project	:	WOW HOTEL
Scope	:	Design, Engineering, Fabrication & Erection Roof Feature
Client	:	M/s WOW Investment Limited
Consultant	:	M/s NEXT Engineering Consultants
Contractor	:	M/s Gunal Construction Trading and Industry

PROJECTS EXHIBIT

YAQUOB TOWER



Project Details :

Project : **Yaquob Tower, Dubai UAE**

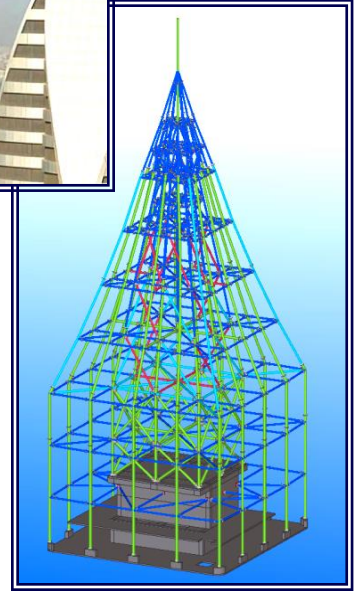
Scope : Design, Detailing, Fabrication
& Erection of Architectural Steel

Consultant : M/S Adnan Saffarini

Contractor : M/S Arabian Construction Co..

PROJECTS EXHIBIT

AL ATTAR TOWER (GEVORA HOTEL)



Project Details :

Project	: Al Attar Tower, Dubai UAE (aka GEVORA Hotel – World's Tallest Hotel)
Scope	: Design, Detailing, Fabrication & Erection of Architectural Steel
Client	: Mr. Ahmad Abdul Rahim Al Attar (Al Attar Group)
Consultant	: M/S Al Turath Engineering Consultants
Contractor	: M/s OST Constructional Projects

PROJECTS EXHIBIT

AKOYA BY ARTESIA

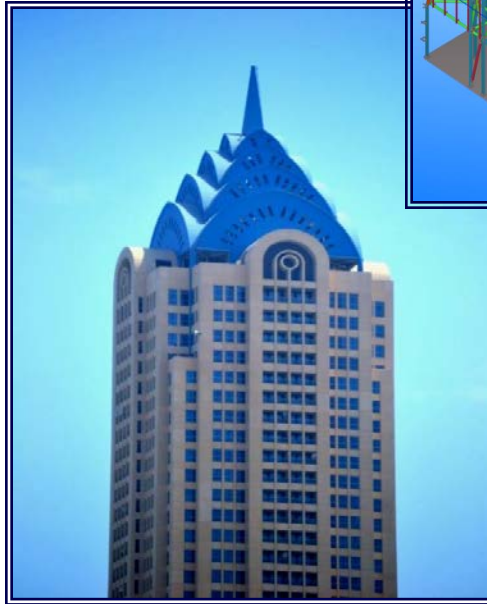
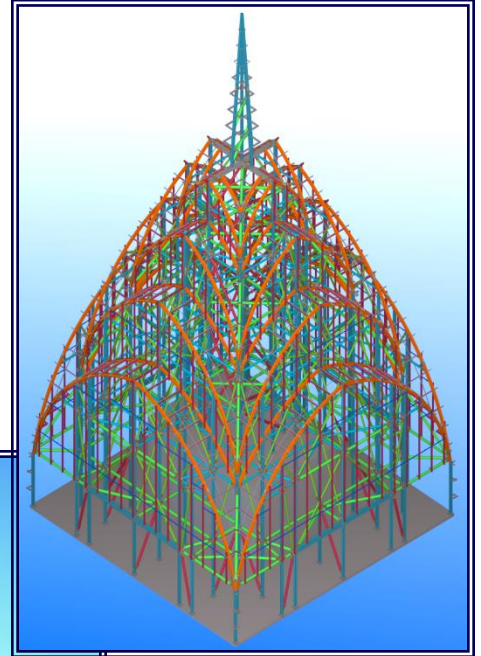
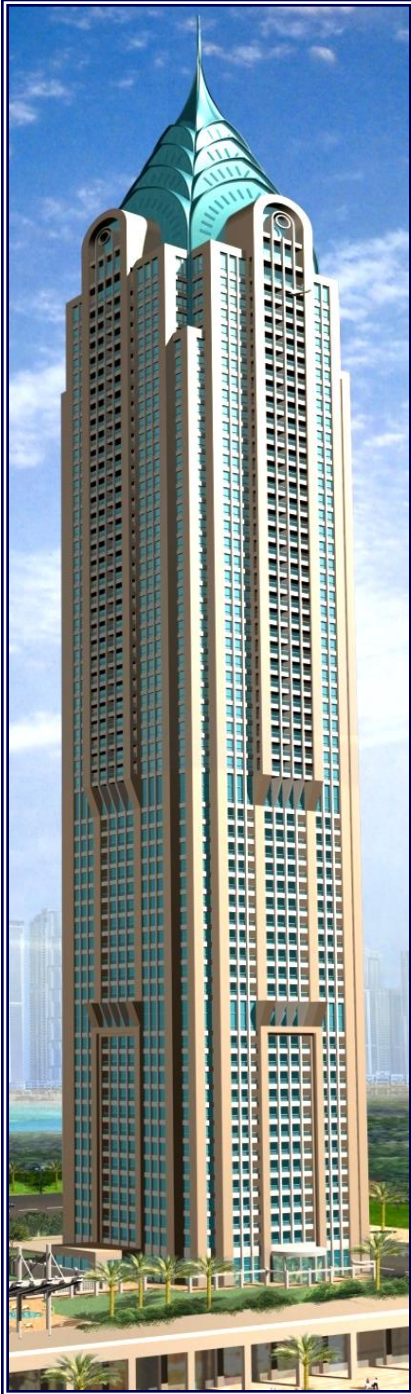


Project Details :

Project	:	Akoya by Artesia
Scope	:	Engineering, Fabrication & Erection Canopies & Fins
Client	:	M/s DAMAC
Consultant	:	M/s Engineering Consortium Consulting Engineers
Contractor	:	M/s CSCEC

PROJECTS EXHIBIT

CHURCHILL TOWER

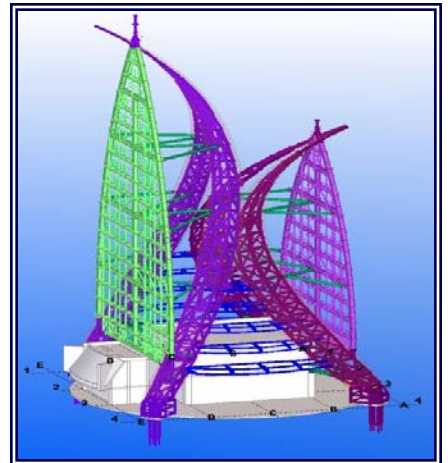
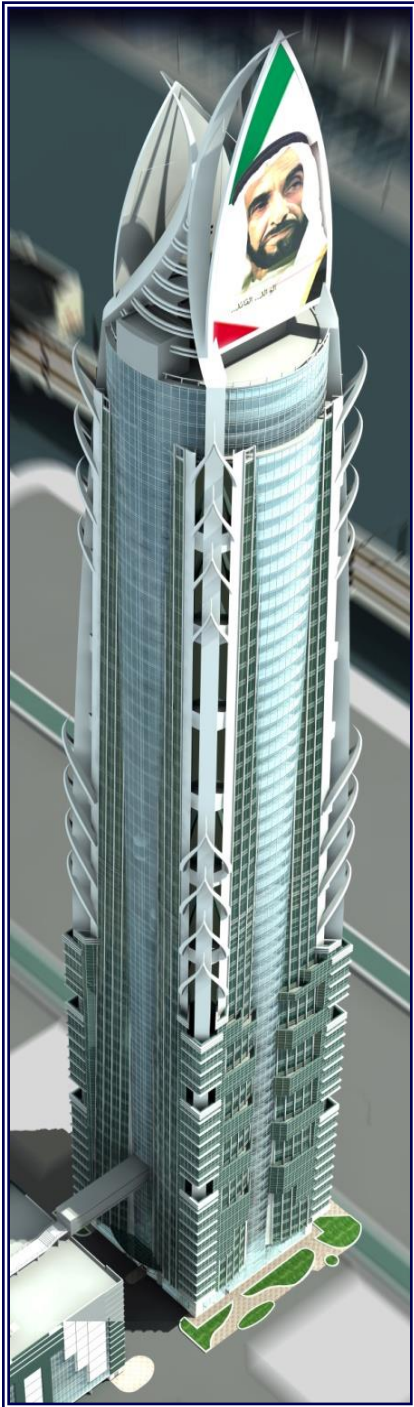


Project Details :

Project	: Churchill Tower, Dubai UAE
Scope	: Design, Detailing, Fabrication & Erection of 500+ MT of Architectural Steel
Client	: M/S Arabian Aluminum
Consultant	: M/S Design & Architecture Bureau
Contractor	: M/S OGER Dubai

PROJECTS EXHIBIT

AL HIKMA TOWER

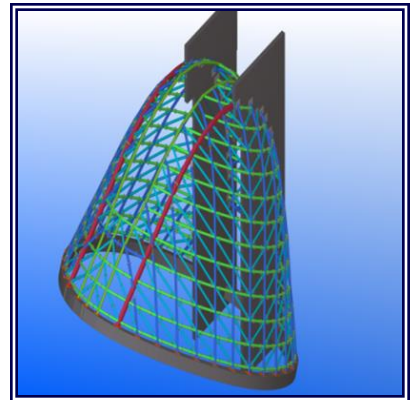


Project Details :

Project	:	Al Hikma Tower, Dubai UAE
Scope	:	Design, Detailing, Fabrication & Erection of 1000+ MT of Architectural Steel
Client	:	H.H. Al Shaikh Esa Bin Zayed Al Nahyan
Consultant	:	M/S Arab Experts
Contractor	:	M/S CSCEC Middle East LLC

PROJECTS EXHIBIT

PARK TWIN TOWER



Project Details :

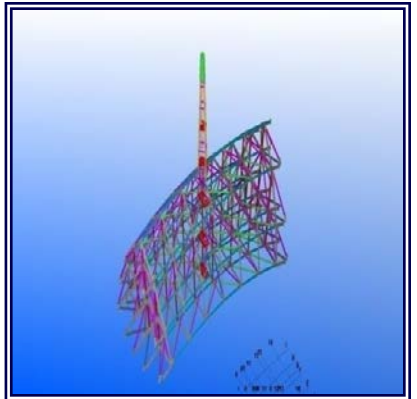
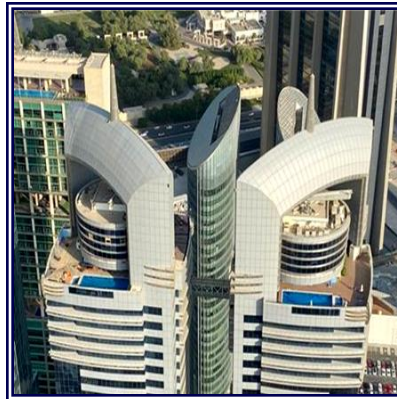
Project : Park Twin Tower, Dubai UAE

Scope : Design, Detailing, Fabrication & Erection of 200+ MT of Architectural Steel

Client : M/S DAMAC

PROJECTS EXHIBIT

DAMAS TWIN TOWER

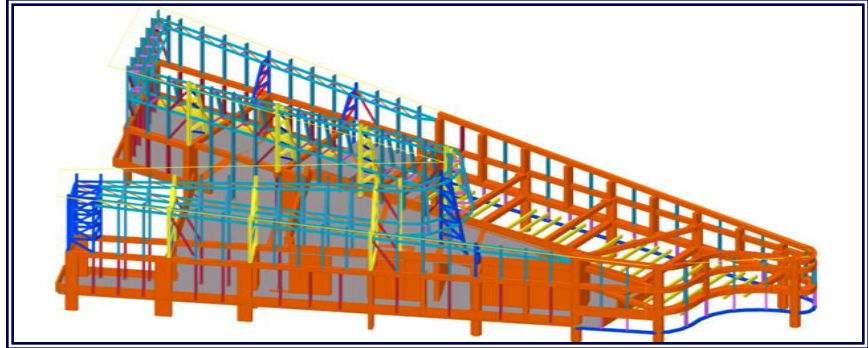


Project Details :

Project	:	Damas Twin Tower, Dubai UAE
Scope	:	Design ,Detailing, Fabrication & Erection of 500+ MT of Architectural Steel
Client	:	M/S DAMAS Real State
Consultant	:	M/S Adnan Saffarini
Contractor	:	M/S Bin Zayed Contracting

PROJECTS EXHIBIT

PARAMOUNT TOWER



Project Details :

Project	: Paramount Tower, Dubai UAE
Scope	: Design, Detailing, Fabrication & Erection of Architectural Steel
Consultant	: M/S Lacasa Architects and Engineering Consultants
Contractor	: M/S CSCEC Middle East LLC

PROJECTS EXHIBIT

DAMAC TOWERS BY PARAMOUNT

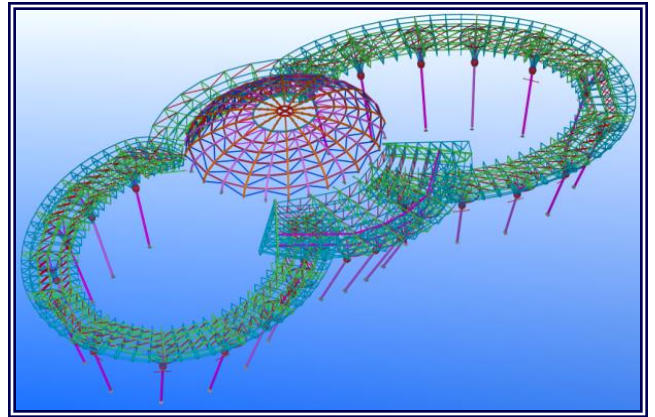


Project Details :

Project	:	Damac Towers by Paramount, Business Bay Dubai
Scope	:	Design, Detailing, Fabrication & Erection of 4 Nos. of Towers Roof Steel Structure
Client	:	M/S DAMAC Star Properties
Consultant	:	M/S KEO Consultant
Contractor	:	M/S TAV Construction

PROJECTS EXHIBIT

JUMEIRA SHEIKHA PALACE



Project Details :

Project	: Jumeira Sheikhah Palace, Dubai UAE
Scope	: Design, Detailing, Fabrication & Erection of 400+ MT of Architectural Steel
Client	: H.H. Shaikh Khalifa Bin Zayed Al Nahyan
Consultant	: M/S Abdul Rahim Architectural
Contractor	: M/S Taif Al Emirates

PROJECTS EXHIBIT

DAMAC HEIGHTS

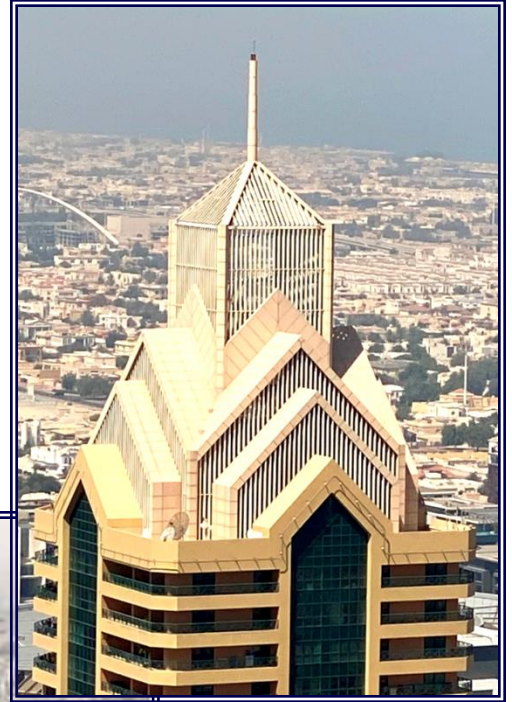


Project Details :

Project	:	Damac Heights, Dubai UAE
Scope	:	Design, Detailing, Fabrication & Erection of Roof Steel Structure
Client	:	M/S DAMAC Properties
Consultant	:	M/S AECOM
Contractor	:	M/S Arabtec Construction

PROJECTS EXHIBIT

AL KHARBASH TOWER

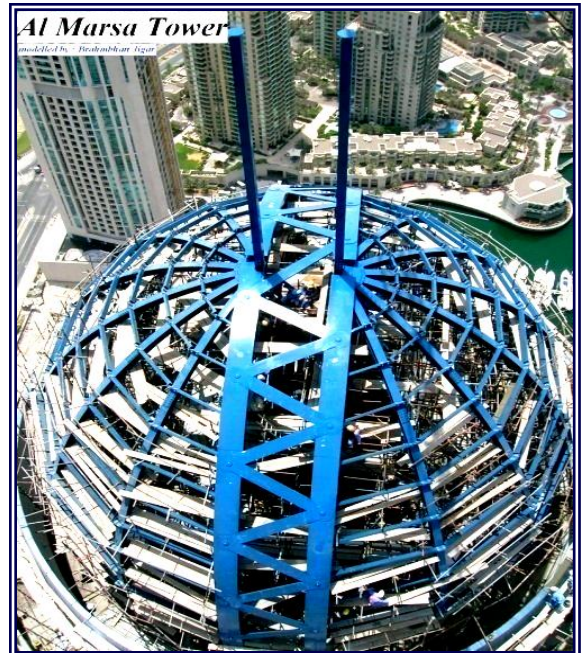


Project Details :

Project	: Kharbash Tower, Dubai UAE
Scope	: Design, Detailing, Fabrication & Erection of Architectural Steel
Client	: M/S Kharbash Investment
Consultant	: M/S DAR Consultant
Contractor	: M/S Al Nekhreh Contracting

PROJECTS EXHIBIT

MARSA TOWER



Project Details :

Project	: Marsa Tower, Dubai UAE
Scope	: Design, Detailing, Fabrication & Erection of architectural steel
Contractor	: M/S Al Naboodah Contracting

PROJECTS EXHIBIT



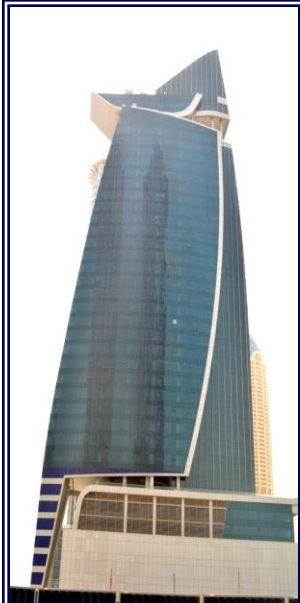
**CRYSTAL
TOWER**



MAZE TOWER



MARINA TERRACE



**MANARA
TOWER**



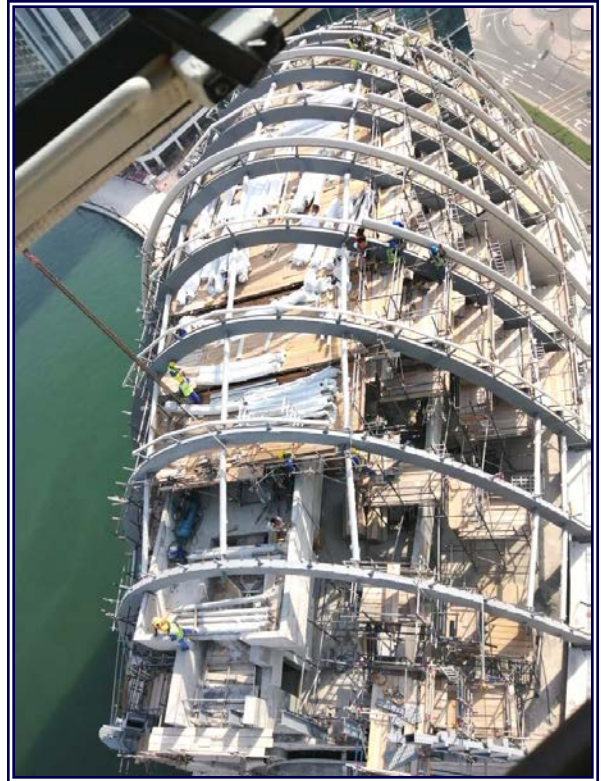
TAYEB TOWER



YOTEL HOTEL

PROJECTS EXHIBIT

AL NOOR TOWER

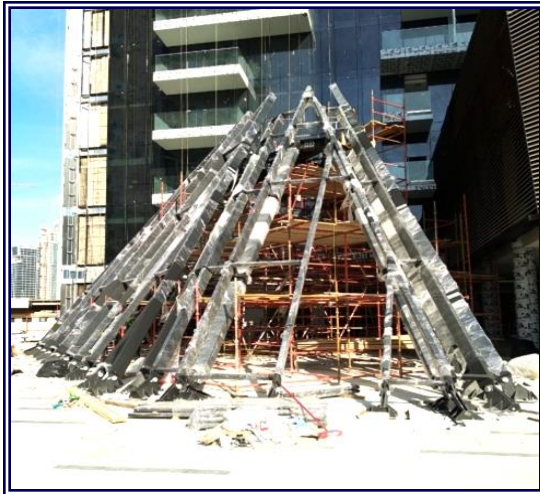
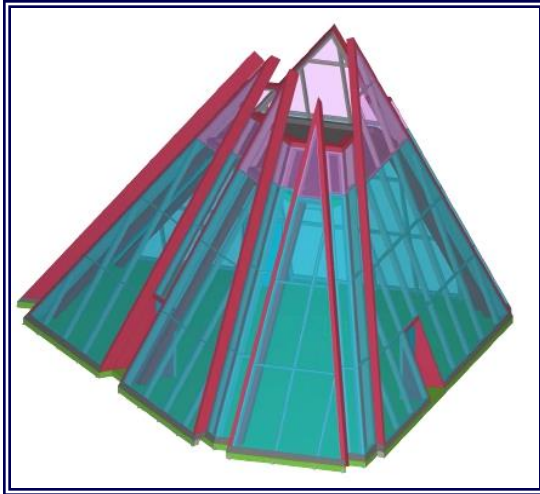


Project Details :

Project	:	Al Noor Tower, Dubai UAE
Scope	:	Design, Detailing, Fabrication & Erection of Roof Feature Steel Structure.
Client	:	M/S Al Ansari Real Estate
Consultant	:	M/S Architecture & Planning Group
Contractor	:	M/S Best Building Contracting

PROJECTS EXHIBIT

MARQUISE RESTAURANT



Project Details :

Project	: Marquise Restaurant, Dubai UAE
Scope	: Design, Detailing, Fabrication & Erection of Architectural Steel
Client	: M/S SRG Holding
Consultant	: M/S ERGA Engineering Consultants
Contractor	: M/S Dubai Contracting Company

PROJECTS EXHIBIT

TOP GOLF - STEEL POLES

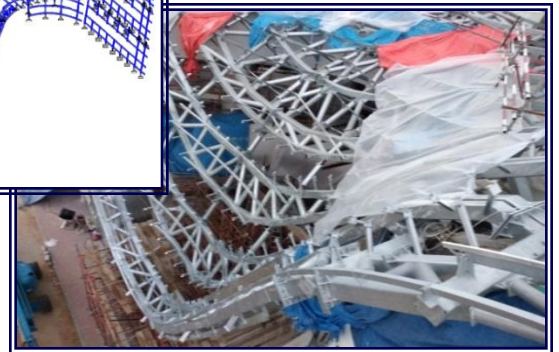
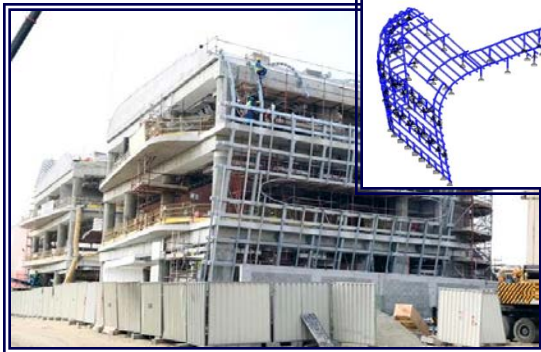
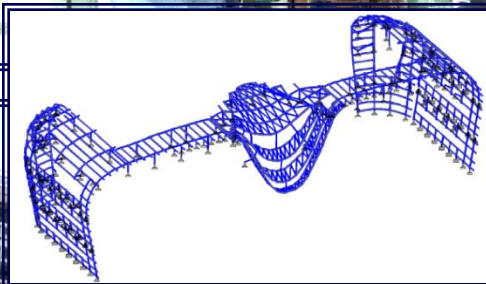


Project Details :

Project	: Top Golf Steel Poles; Dubai UAE
Scope	: Design, Detailing, Fabrication & Erection of Steel Poles
Client	: M/S Al Wasl
Consultant	: M/S AE Prime
Contractor	: M/S Al Malik Bldg Contracting

PROJECTS EXHIBIT

FERRARI AND MASERATI SHOWROOM

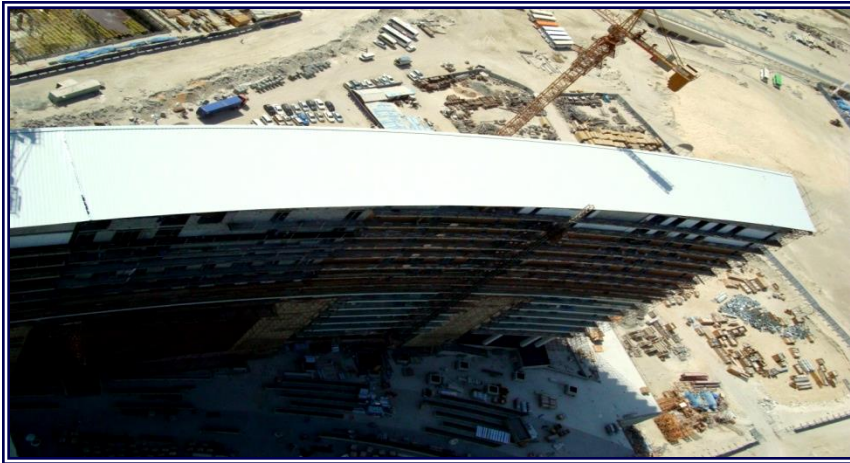


Project Details :

Project	:	Ferrari and Maserati Showroom Dubai UAE
Scope	:	Design, Detailing, Fabrication & Erection of Architectural Steel
Client	:	M/s Al Tayer Motors
Consultant	:	M/s ART Consultant
Contractor	:	M/s Al Tayer Contracting

PROJECTS EXHIBIT

U-BORA TOWERS



Project Details :

Project : U-Bora Tower, Business Bay, Dubai UAE

Scope : Design, Detailing, Fabrication & Erection of more than 1500 MT of Structural , architectural steel & standing seam

Client : Bando, Korea

Consultant : M/S Whitby & Bird Engineering

Contractor : M/S Bando Engineering Cons.

PROJECTS EXHIBIT

TDRA HEADQUARTERS

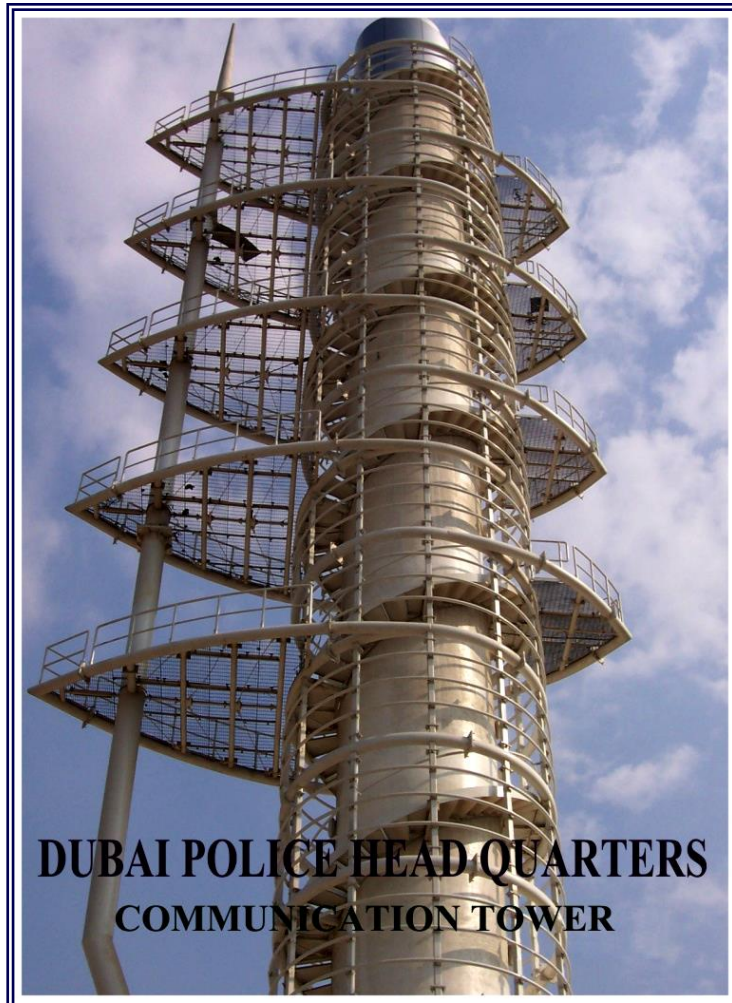


Project Details :

Project	: TDRA Headquarters, Dubai UAE
Scope	: Design, Detailing, Fabrication & Erection of Roof Steel Structure
Client	: M/S Telecommunications And Digital Government Regulatory Authority (TDRA)
Consultant	: M/S Adnan Saffarini
Contractor	: M/S Parkway International

PROJECTS EXHIBIT

DUBAI POLICE HQ COMMUNICATION TOWER

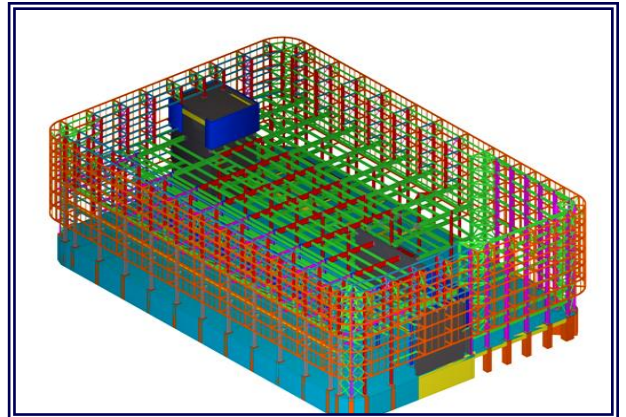


Project Details :

Project	:	Dubai Police – Communication Tower
Scope	:	Steel Structure Works
Client	:	M/S Dubai Police
Consultant	:	M/S Al Hashmi
Contractor	:	M/S Al Shafar General Contracting

PROJECTS EXHIBIT

COMMERCITY – CENTRAL UTILITY CENTRE

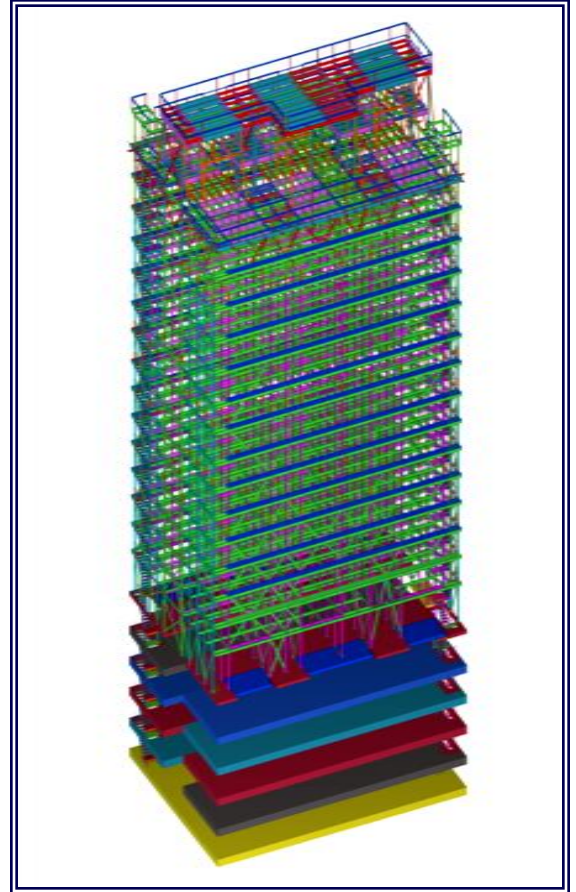


Project Details :

Project	:	Commercitiy, Central Utility Centre
Scope	:	Civil and Steel Structure Works
Client	:	M/S Dubai Commercitiy
Consultant	:	M/S P&T Architects and Engineers
Contractor	:	M/S Techno Steel Construction

PROJECTS EXHIBIT

TURNKEY - AL HIKMA AUTOMATED CAR PARKING

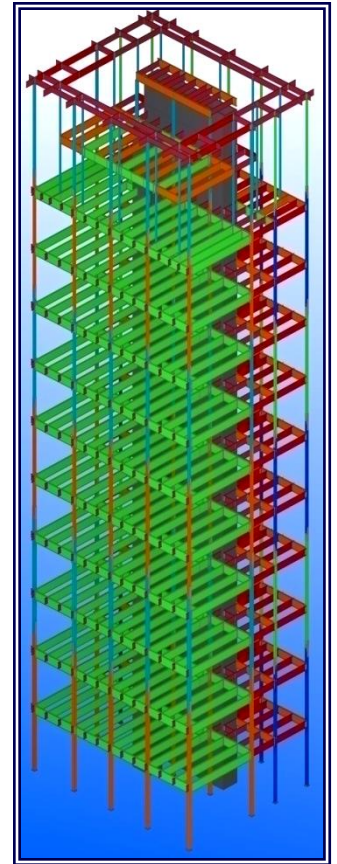


Project Details :

Project	:	Al Hikma Automated Car Parking
Scope	:	Construction of Automated Car Parking
Client	:	H.H. Al Shaikh Esa Bin Zayed Al Nahyan
Consultant	:	M/S Arab Experts
Contractor	:	M/S Techno Steel Construction

PROJECTS EXHIBIT

TURNKEY - AL JABER RESIDENTIAL BUILDING



Project Details :

Project	:	4B+G+10F Al Jaber Residential Bldg, Al Barsha 1, Dubai UAE
Scope	:	Construction and Steel Structure Works for Residential Building
Client	:	M/s Al Jaber Trading Agencies
Consultant	:	M/S X-Architect
Contractor	:	M/S Techno Steel Construction

PROJECTS EXHIBIT

TURNKEY - ASWAAQ SUPERMARKET – AL WARQAA



Project Details :

Project	:	Aswaaq Supermarket, Al Warqaa
Scope	:	Steel Structure Building – Turnkey Construction
Client	:	M/S Aswaaq Supermarkets
Consultant	:	M/S X-Architects
Contractor	:	M/S Techno Steel Construction

PROJECTS EXHIBIT

TURNKEY - ASWAAQ SUPERMARKET – AL BARSHA



Project Details :

Project	: Aswaaq Supermarket, Al Barsha 3
Scope	: Steel Structure Building – Turnkey Construction
Client	: M/S Aswaaq Supermarkets
Consultant	: M/S X-Architects
Contractor	: M/S Techno Steel Construction

PROJECTS EXHIBIT

TURNKEY – KARAMA MULTI USE BLDG



Project Details :

Project	:	Multi-Use Bldg, Karama, Dubai UAE
Scope	:	Concrete Structure Building– Turnkey Construction
Client	:	M/s Red Crescent Society
Consultant	:	M/S Al Hawraa Engineering Consultant
Contractor	:	M/S Techno Steel Construction

PROJECTS EXHIBIT

TURNKEY – AGENTS BUILDING

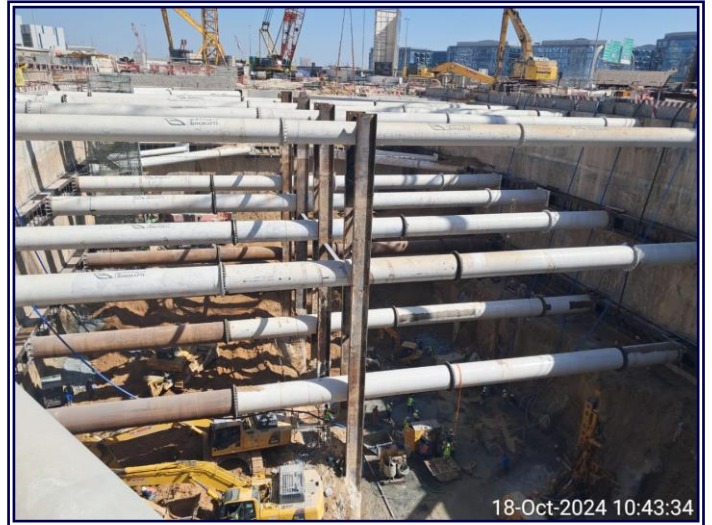


Project Details :

Project	:	Offices & Storage Facilities
Scope	:	Turnkey Construction
Client	:	M/s Al Maktoum Airport
Consultant	:	M/S Pioneers of Experts
Contractor	:	M/S Techno Steel Construction

PROJECTS EXHIBIT

BURJ BINGHATTI

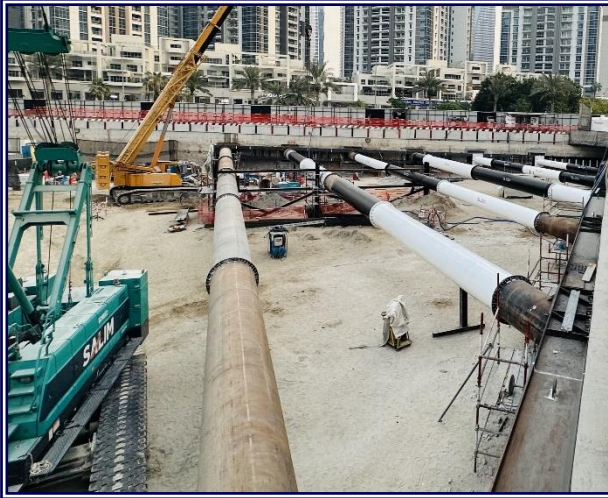


Project Details :

Project	:	Burj Binghatti
Scope	:	Engineering, Fabrication & Erection Shoring Struts
Client	:	M/s Binghatti
Consultant	:	M/s Silverstone
Contractor	:	M/s Granada Europe Construction

PROJECTS EXHIBIT

BUGATTI

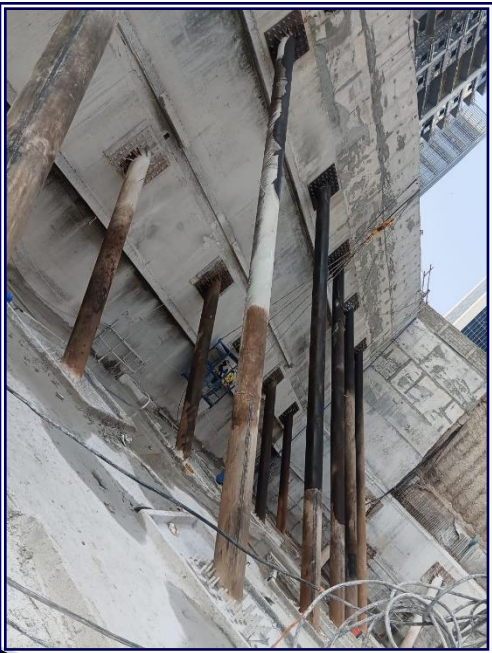
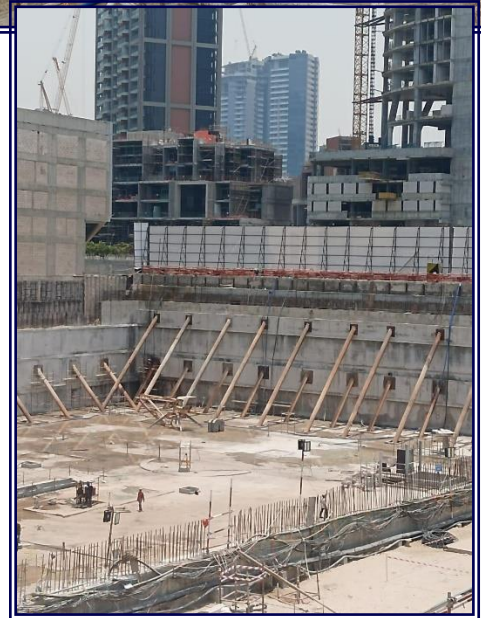


Project Details :

Project	:	Bugatti
Scope	:	Engineering, Fabrication & Erection Shoring Struts
Client	:	M/s Binghatti
Consultant	:	M/s Silverstone
Contractor	:	M/s Granada Europe Construction

PROJECTS EXHIBIT

ONE BY BINGHATTI

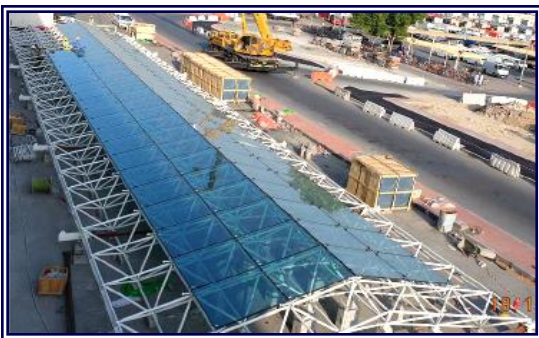
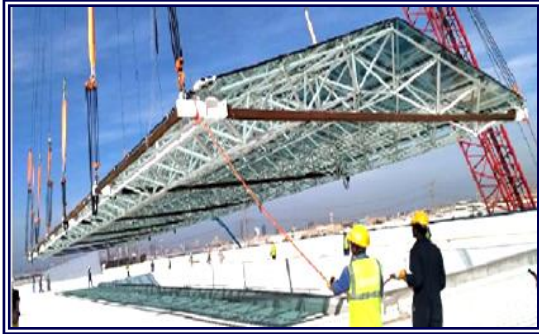


Project Details :

Project	:	One by Binghatti
Scope	:	Engineering, Fabrication & Erection Shoring Struts
Client	:	M/s Binghatti
Consultant	:	M/s Silverstone
Contractor	:	M/s Granada Europe Construction

PROJECTS EXHIBIT

SPACE FRAMES



Project Details :

Project	:	Fruits and Vegetable Market Al Warsan, Dubai UAE
Scope	:	Hybrid Space Frame Steel Structure
Client	:	M/s Dubai Municipality
Consultant	:	M/s Al Turath Engineering Consultants
Contractor	:	M/s Al Turath Al Aseel Contracting

PROJECTS EXHIBIT

SPACE FRAMES



Project Details :

Project	:	Dubai Police General HQ – General Department of Forensic Science and Criminology
Scope	:	Hybrid Space Frame Steel Structure
Client	:	M/s Dubai Police General Headquarters
Consultant	:	M/s Al Heshmi
Contractor	:	M/s Al Naboodah Contracting Co. LLC

PROJECTS EXHIBIT

SPACE FRAMES



Project Details :

Project : Landmark Hotel – Abu Dhabi

Scope : Hybrid Space Frame Steel Structure

Client : M/s Landmark Hotel

Contractor : M/s Prowess Alliances & M/s Ginco – Joint Venture

PROJECTS EXHIBIT

SPECIAL PROJECTS



AL ZAMALEK



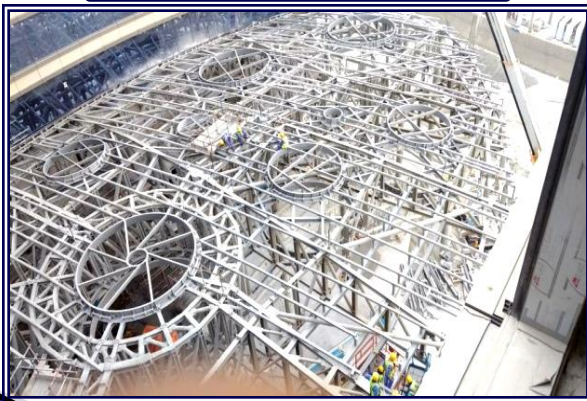
ZABEEL PALACE



BAHIYA MAJLIS



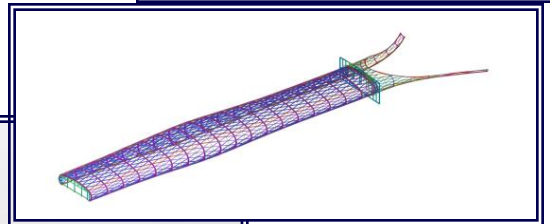
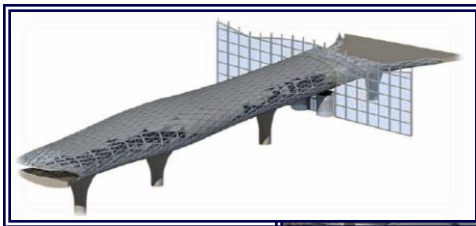
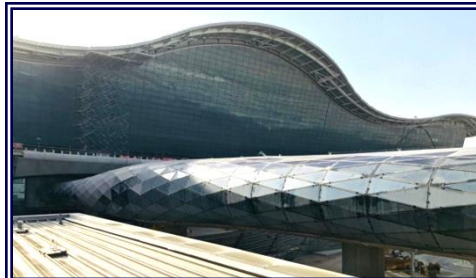
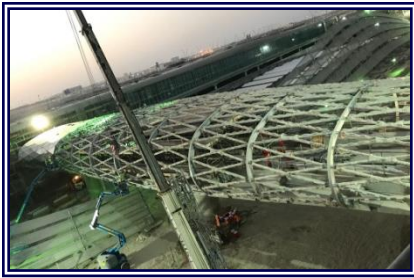
**EMIRATES
HOSPITAL**



**JEWEL OF THE
CREEK**

PROJECTS EXHIBIT

LINK BRIDGES



Project Details :

Project	: Abu Dhabi Airport Car Park Link Bridge
Scope	: Design, detailing, fabrication and erection link bridges steel structure
Client	: M/S Abu Dhabi Airport
Consultant	: M/S KPF
Contractor	: M/S TCA JV

PROJECTS EXHIBIT

LINK BRIDGES

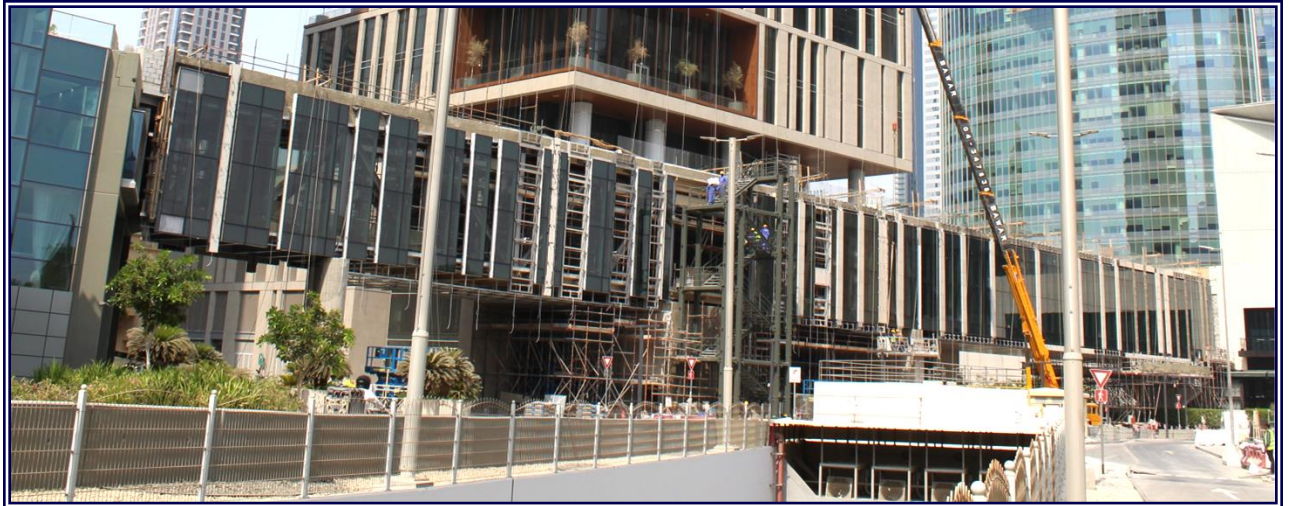


Project Details :

Project	:	ENBD Link Bridge, Nadd Al Sheba Dubai, UAE
Scope	:	Design, detailing, fabrication and erection link bridges steel structure
Client	:	M/s ENBD
Consultant	:	M/S Kling Consult
Contractor	:	M/S Naresco Contracting

PROJECTS EXHIBIT

LINK BRIDGES



Project Details :

Project	:	DIFCLink Bridge, Duba UAE
Scope	:	Design, detailing, fabrication and erection link bridges steel structure
Client	:	M/s DIFC
Consultant	:	M/S LACASA
Contractor	:	M/S Ali & Sons Contracting

PROJECTS EXHIBIT

LINK BRIDGES



Project Details :

Project	:	Burj Crown Link Bridge
Scope	:	Design, detailing, fabrication and erection link bridges steel structure
Client	:	M/s EMAAR
Consultant	:	M/S Dubai Consultant / M/s AEC
Contractor	:	M/S Al Basti & Muktha

PROJECTS EXHIBIT

LINK BRIDGES



Project Details :

Project	: Warsan Link Bridges, International City Dubai, UAE
Scope	: Design, detailing, fabrication and erection link bridges steel structure
Client	: M/s International City
Consultant	: M/S AE7 Consultancy Services
Contractor	: M/S Ginco General Contracting

PROJECTS EXHIBIT

LINK BRIDGES



Project Details :

Project	:	Steel Link Bridge for Multistory Car Park
Scope	:	Construction of Car Park Link Bridge
Client	:	M/S Dubai Municipality
Consultant	:	M/S Design Center
Contractor	:	M/S Bhatia General Contracting Co. LLC

PROJECTS EXHIBIT

LINK BRIDGES



DEIRA WATERFRONT - SKY BRIDGE



JEWEL OF THE CREEK 4NOS. BRIDGES

PROJECTS EXHIBIT

LINK BRIDGES



MAZE TOWER



CHELSEA TOWER



DAFZA BRIDGE



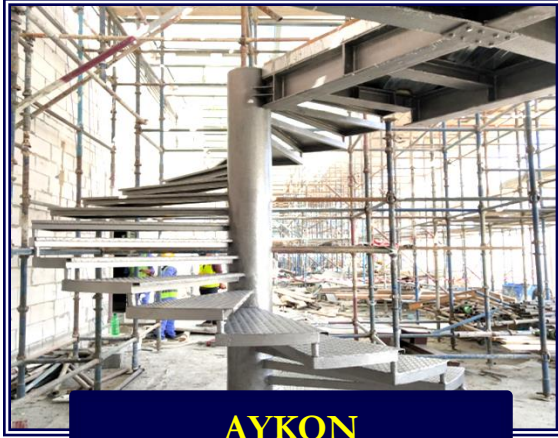
AL ATTAR TOWER



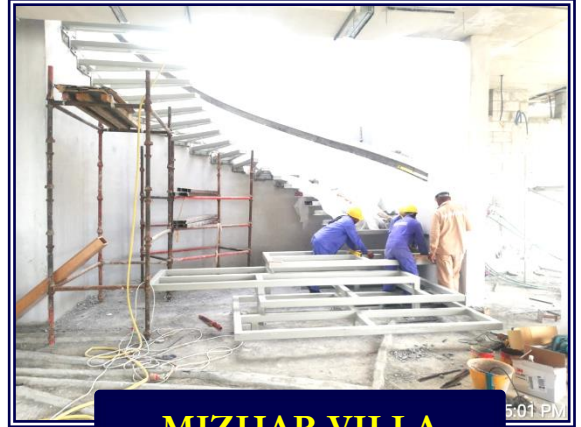
DAMAS TOWER

PROJECTS EXHIBIT

STAIRCASES



AYKON



MIZHAR VILLA



GLASS BOX STAIRCASE



PALM DEIRA HOTEL



UMM AL SHEIF VILLA



PRIVATE VILLA

PROJECTS EXHIBIT

CANOPIES



**LIEBHERR WH
CANOPY**



14 NOS. CANOPIES



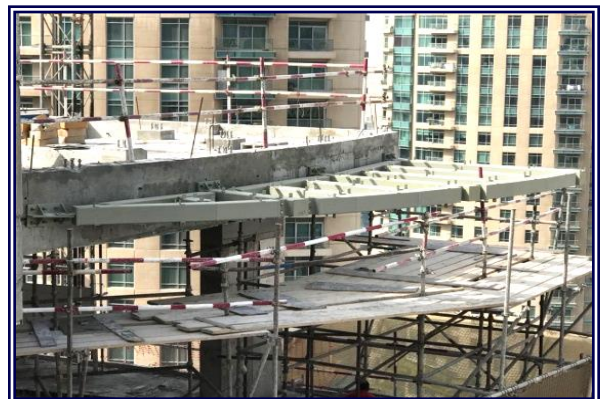
**AL BARSHA
COMMERCIAL BLDG**



U-CANOPY



BAHWAN TOWER CANOPY



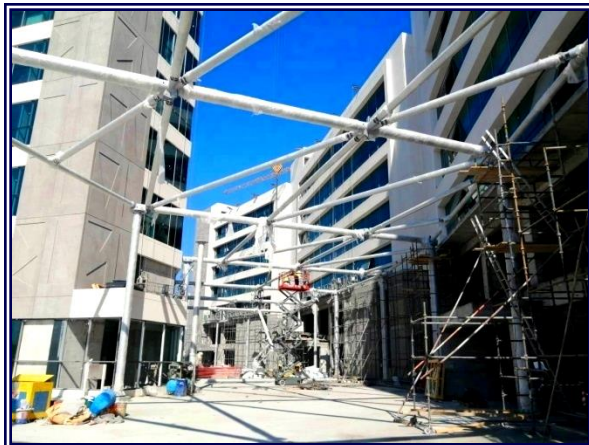
QUEEN STAR CANOPY

PROJECTS EXHIBIT

SKYLIGHTS



DUBAI OUTLET MALL



SAUDI GERMAN HOSPITAL

PROJECTS EXHIBIT

WAREHOUSES / FACTORIES



TECHNO STEEL FACTORY



LIEBHER WAREHOUSE



ASMAWI WAREHOUSE



JOTUN WAREHOUSE



**GOSHICHAND
WAREHOUSE**



**TRANS GULF
CEMENT FACTORY**

PROJECTS EXHIBIT

WAREHOUSES / FACTORIES



**WURTH GULF
WAREHOUSE**



**AHMED AL RAHOOMI
WAREHOUSE**



ALUMINUM FACTORY



**FEDERAL FOOD
WAREHOUSE**

PROJECTS EXHIBIT

WAREHOUSES / FACTORIES



**ARABIAN FURNITURE
WAREHOUSE**



**GLOBAL PIPING
WAREHOUSE**



**OTHER WAREHOUSES/
FACTORIES**



PROJECTS EXHIBIT

SHOWROOMS



TAYYAB SHOWROOM



LOOTAH SHOWROOM



SUZUKI SHOWROOM



FERRARI AND MASERATI SHOWROOM

PROJECTS EXHIBIT

SPORTS / RECREATION FACILITIES



INDOOR SPORTS HALL



WILD WADI



DUBAI MUNICIPALITY INDOOR SWIMMING POOL



SOCCER HALL



DUBAI INT'L BOWLING CENTER

PROJECTS EXHIBIT

METRO RAILWAYS/STATIONS



**ATLANTIS STATION
@ PALM JUMEIRAH MONORAIL
TRANSIT PROJECT**



**TRUMP TOWER STATION
@ PALM JUMEIRAH MONORAIL
TRANSIT PROJECT**



**VILLAGE CENTER STATION
@ PALM JUMEIRAH MONORAIL
TRANSIT PROJECT**



DUBAI METRO

PROJECTS EXHIBIT

VILLAS, RESIDENTIAL & COMMERCIAL



**RED CRESCENT
SOCIETY BLDG**



**AL MANSAR
COMMERCIAL BLDG**



**AL AWIR FARM
HOUSE VILLA**



**MOHD SAEED SHUROOQ
RESIDENTIAL**



**DR. AHMAD AL
BANNA VILLA**

PROJECTS EXHIBIT

PETROL STATIONS



**ADNOC FILLING
STATION**



**EMARAT FILLING
STATION**



PROJECTS EXHIBIT

MISCELLANEOUS STEEL WORKS



REFURBISHMENTS



REPAIRING WORKS



**PANORAMIC
LIFTS SUPPORT**



**DECORATIVE
FIN**



**STRENGTHENING
WORKS**



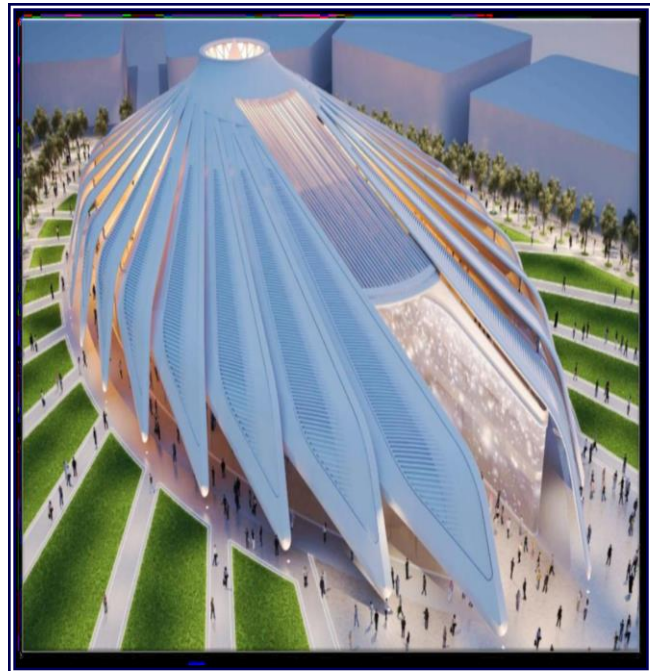
CAR PARKING

PROJECTS EXHIBIT

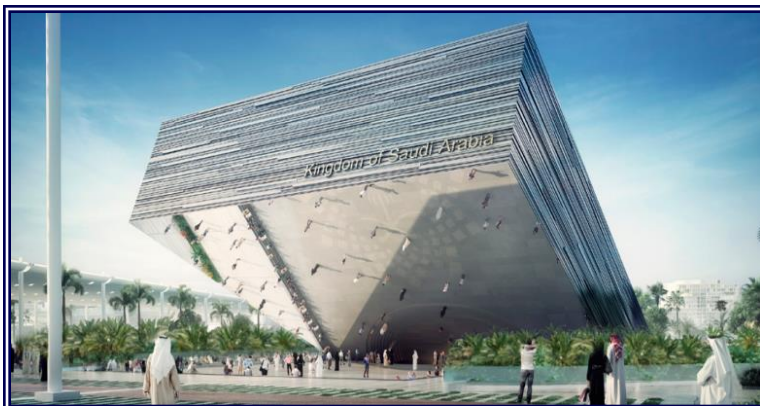
INVOLVEMENT IN EXPO 2020 PROJECTS



MOBILITY PAVILION



THE UAE PAVILION



KSA PAVILION

PREVIOUS APPROVAL FROM CONSULTANT

DIFC

SUBMITTAL FORM

Submittal No. CP05-ASC-STR-FRG-1019(LB)
 Date: 3-Oct-22 Rev. 00

TRANSMISSION OF DRAWINGS, DOCUMENTS, SAMPLES, ETC.

RE: Pre-qualification for Link Bridge Steel Structure Works - M/s. Techno Steel Construction LLC

PACKAGE NO. CP05-03-MW

TO LACASA Architects & Engineering Consultants

Cc. Turner International Middle East

Attachments: Sample Technical data Specs/BOM copy
 Drawing Document Profile
 Original Catalogues Compliance Statement Others

ITEM	QTY.	DOCUMENT / DRAWING NO.	DESCRIPTION	TYPE	SUBMIT. CODE	ACTION
1	2		Pre-qualification for Link Bridge Steel Structure Works - M/s. Techno Steel Construction LLC	OT	1	AN

COPIES:

FOR CONTRACTOR: 3 TO 4

Supervision Consultant / PM to enter Action Codes and Remarks, and return to Contractor

REMARKS:

Refer to attached comment sheet
5/10/22

Correction or comments made relative to submittals during this review DO NOT relieve the Contractor from the responsibility of meeting the project requirements set forth under the Contract, where the Contractor is fully responsible for the strict conformance with the Contract requirements/provisions.

COPIES:

FOR EMPLOYER / PM:

Code to be entered by Supervision Consultant

CA - Callout/Rev. Sample MD - Manufacturer's Data CI - Callout/Rev. Other

Logo: Ali & Sons, LACASA, TIME

Form # ASC17032 Rev 01 May 2022

LACASA

Project: BURJ CROWN - DOWNTOWN DUBAI
 Plot No. 27
 Client: EMAAR PROPERTIES P.J.S.C.

Client	Main Consultant	Contractor
EMAAR	Dubai Consultant	ASB

SUB-CONTRACTOR PRE-QUALIFICATION

Date of submission: 29.09.2022 Submission No: ABM-SPQ-073 (Rev.0)

Civil MEP Others

Description of works & services proposed for sub-contractor:
 Prequalification for Link Bridge Structural Steel Works
 (Alternate Subcontractor) Technosteel Construction LLC
 PO Box 21687, Dubai, UAE

License No: 228408

Expiry Date: 05.07.2023

Agreement between main contractor and proposed sub-contractor

Attached Not Attached

Contractor: M/s. Al Basti & Mukha LLC
 Originator: Name: Baiju Ramachandran
 Designation: Sr. Project Manager
 Sign: [Signature]

Received by Consultant: Name & Designation: [Signature]

We raise no technical objection to the proposed Alternate link bridge sub Contractor subject to strict comply the following

1. RTA Construction NOC
2. Obtain DM approval on design & drawings.
3. Submit all erection method statement.
4. Resubmit & obtain all shop drawings, material, MSPA etc. approval.
5. Comply project programme.
6. Submit Welding Paddy testing laboratory.
7. Design & erection responsibility along with P.I Cover
8. If submittal obtain AEC & RTA approval on design, drawings & erection.

Consultant Authorized Signatures

Client Authorized Signatures

Received by Contractor

Approval Status: A Approved B Approved with Comments C Revise & Resubmit D Rejected

Dubai Consultants

DUBAI CONSULTANT

PREVIOUS APPROVAL FROM CONSULTANT

UAE Pavilion at Expo 2020 Dubai

SUB CONTRACTOR / SUPPLIERS APPROVAL REQUEST (SCAR)

DOCUMENT REFERENCE	PROJECT CODE	DOCUMENT TYPE	ORIGINATOR	ACONEX NUMBER	REVISION	DISCIPLINE	DATE
	344	SCAR	Arabtec	344-PO-07-484840-AR-PO-0004	00	Architectural	15/05/2019
ATC Ref. No.: SCAR-0082							

Pre-Qualification Documents for M/s. Techno Steel Construction LLC

Scope: Supply and Installation of Pearl Auditorium Main Steel Structure and Inner Structure with Gratings and Metal Decking

Attachments:

- Company Profile
- Authentic Licensing
- Certificates
- Previous Project History
- Organization Chart
- Delegated Personnel / CVs
- Others :

Specs. Ref. : _____ BoQ Ref. : _____

Originator Ref.:

Contractor's Representative: Stephen Muir
Title: Project Director
Signature:

Consultant's Comments:

Please find comments on attached sheets

A Approved
 Approved with Comments
 C Revise and Resubmit
 D Rejected
 E For Information

Reviewed By : _____ Resident Engineer :

Signature : _____ Signature : _____
Date : _____ Date : _____

COMMENTS FROM PROJECT MANAGER / CLIENT

Proceed as recommended
 Do not proceed
 Others

Form # 1305-CPS) Rev 3- Jun09

CALATRAVA INTERNATIONAL

TECHNICAL SUBMITTAL

Project : Holiday Inn & Kingston Residences	TS Ref.:	GAC/HI/CAN/F+G/EDGE/MAK/TS-033
Project ID : 7878	Revision No.:	1
Issued by : Gulf Asia Contracting	Date:	3-Jun-20
Issued to : CANADIAN /EDGE /MAK	Title:	

Discipline: Arch. Struct. Mech. Elec. VT Façad Others :

DESCRIPTION	Qty.	Ref. No.	Description	Rev.
1	1	GAC/HI/CAN/F+G/EDGE/MAK/TS-033	Pre-Qualification	0
Techno Steel Construction LLC				
Work: Design, Supply & Erection				

FOR CONTRACTOR

Checked by : Mani vannan
Review by: MAK/EDGE
Signed:

RECEIPT ACKNOWLEDGED BY ENGINEER
03 JUN 2020

RETURNED TO CONTRACTOR WITH STATUS

A. Approved B. Approved as Noted C. Revise/Resubmit D. For Information

Name/Signature: _____ Date: _____

COMMENT BY : M/s Canadian

Approved as per HGI

RECEIPT ACKNOWLEDGED BY CONTRACTOR

Received by: _____ Signature & Date : _____

DISTRIBUTION




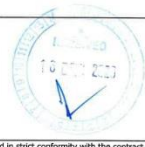

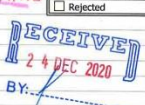


Employer QS Engineer Others

www.edgedesign.ae
PR OCF # 71




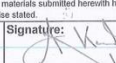


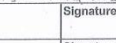

1401 Code Business Tower | Al Barsha 1
P.O. Box 393943 | Dubai | UAE

CANADIAN CONSULTANT

PREVIOUS APPROVAL FROM CONSULTANT


  	
Project: 9 BUILDINGS PROJECT, AL MEYDAN, DUBAI, UAE	
Consultant : 360D Arch'l Design Consultancy LLC	Contractor : M/s. Progress Construction L.L.C
Sub contractor : Techno Steel Construction Co. LLC.	
PRE-QUALIFICATION	Ref. Number: ARP1.1/PREQ/CVL/TD-180 (Rev.00)
	Date: 15/Dec/20
	Discipline/Section: CIVIL
	Plots no: CP01-001
1. ITEM DESCRIPTION : Pre-qualification for Techno Steel Roof Steel Canopy	
Type of Document: <input type="checkbox"/> Data Sheet <input checked="" type="checkbox"/> Catalogue <input checked="" type="checkbox"/> Certificate <input type="checkbox"/> Sample <input checked="" type="checkbox"/> Test Results	
Area of Application: B.O.Q. Ref. No. : Drawing Ref. : Standards : Specification Ref. : Attached all relevant technical literature marked to identify relevant description, current Test Certificates, samples as appropriate.	
2. MANUFACTURER/SUPPLIER : Company Name: M/s Techno Steel Construction Co. LLC. Address : P.O. Box 21687 Dubai U.A.E Local Agent : As mentioned above	
3. DELIVERY : Country of Origin : <input checked="" type="checkbox"/> Locally <input type="checkbox"/> Overseas Delivery : Ex-works/ Total Duration Program : Estimated Time of Arrival on Site 	
We certify that the above submitted items have been reviewed in detail and are correct and in strict conformity with the contract drawings and specifications except as otherwise stated; also that the material sources indicated above have been reviewed in detail and that they will supply the submitted items in conformity with the above specifications and standards.	
Submitted by Contractor Sr./QA/QC: (Name/ Signature/Date)  Engr. Mohammed Al Mukdad	Received by Consultant: (Name/ Signature/ Date)
4. Consultant's Comments: <input type="checkbox"/> Approved <input checked="" type="checkbox"/> Approved As Noted <input type="checkbox"/> Revise, Resubmit <input type="checkbox"/> Rejected Final Approval subject to performance at site. Shop drawings and material submitted to be submitted to consultant for review and approval.	
 BY:	
Commented by: (Name/ Signature/Date) 	Consultant's PM: (Name/ Signature/Date) 
Received by Contractor: (Name/ Signature/ Date)	
Approval shall not relieve Contractor of any of his obligations under the Contract or constitute authorization of any change to Contract Documents or variation to the works. Contractor is responsible for dimensions, quantities and coordination with other trades.	
Form No.9.18 ISSUE DATE: DEC 2017	Rev 03

360 DEGREES ARCH'L DESIGN CONSULTANCY

Consultant 	Main Contractor 	Client 
SUBMITTAL TRANSMITTAL SHEET #		TR-5832
PROJECT NAME DAMAC HEIGHTS - Residential Building [Plot No. A3A 392-569]	Project No. : 2011/014	Date : 19-Aug-15
<input type="checkbox"/> Architectural <input checked="" type="checkbox"/> Structural <input type="checkbox"/> Mechanical <input type="checkbox"/> Electrical <input type="checkbox"/> Other		
Submittal No. S11-ST-GEN-SP-0048	Revision 1	
Main/Subcontractor ATC / Techno Steel	Sub Contractor Techno Steel	
Submittal Title SUB-CONTRACTOR APPROVAL	Doc. Ref.:	
We are sending herewith under separate cover the drawings / documents / samples listed below		
REFERENCE	DESCRIPTION	REMARKS
DWG. -	M/s. Techno Steel Prequalification Documents for the purpose of achieving Dubai Municipality approval for their execution of structural steel works at L86	3 Sets
SPEC. -		
B.O.Q. -	Note:- Engineer's previous comments have been addressed, refer attached response matrix for further reference.	
Enclosure		
We certify that the documents / materials submitted herewith have been reviewed in detail and are in strict conformance with the contract drawings and specifications except as otherwise stated.		
Contractor Name: Signature: AYMAN KAMAL Project Manager  19/8/15	Received by:  Date: 19 AUG 2015	
Consultant Review Comments		
Subject to approval of documents re-created in Rev.00 (Pending Submittal) Submit CUS of Personnel to be proposed for the project. Submit independent testing agency (stee; Par. 1.5.6). Subject to factory visit and audit.		Consultant Decision: <input type="checkbox"/> APP Approved <input checked="" type="checkbox"/> AAN Approved As Noted <input type="checkbox"/> NA Not Approved <input type="checkbox"/> NR Not Required
Received by Arabtec Signature: 	Date: 30/8/15	DAMAC HEIGHTS PROJECT 19 AUG 2015 
Corrections or comments made relative to submittals during this review do not relieve the contractor from compliance with the requirements of this Contract. This check is only for review of general conformance with the design concept of the project and general compliance with the information given in the contract documents. The contractor is responsible for confirming and correlating all quantities and dimensions, selecting fabrication processes and techniques of construction, coordinating his work with that of other trades and performing his work in a safe and satisfactory manner.		
Distribute to:		
<input type="checkbox"/> ATC/Techno Steel <input type="checkbox"/> PM <input type="checkbox"/> CM <input type="checkbox"/> IM <input type="checkbox"/> A/E/C <input type="checkbox"/> DS <input type="checkbox"/> DAMAC HEIGHTS PROJECT <input type="checkbox"/> 19 AUG 2015 <input type="checkbox"/> 15:00:00 - 5:00:00		
TRANSMITTED		
HSE: Arabtec Safety Dept. Shall receive the plan and		

AECOM MIDDLE EAST LTD

PREVIOUS APPROVAL FROM CONSULTANT



arkiplan consulting architects & engineers
 P.O. BOX 5046, DUBAI, U.A.E. TEL: 04 387 3863, FAX: 04 387 3862
 website: www.arkiplan.co, email: arkiplan@em.ae

DOCUMENT SUBMITTAL	
Proj. No. / Proj. Name:	B+G+2P+21 Floor Com./Res.- Proj No. 266
Client:	Saud Shehatha M Alanazi
Consultant:	Arkiplan Consulting Architects & Engineers
Main Contractor:	Al Jassmy Contracting Co. LLC
Subcontractor:	
Date:	23-12-2020
Submittal Ref.:	DS/0201
Subcontractor Submittal Ref.:	

TRADE
 ARCHITECTURAL STRUCTURAL ELECTRICAL PLUMBING A/C OTHER

DRAWING, SPECIFICATION, BOQ REFERENCE:

DESCRIPTION
 PREQUALIFICATION FOR STEEL STRUCTURE VENDOR (TECHNO STEEL CONSTRUCTION LLC)

Al Jassmy Signature: *[Signature]* Received by Consultant: _____

Subcontract Date & Signature: _____

Date Submitted: _____ Approval required by: _____

CONSULTANT COMMENTS

Approved subject to the following comments +
 1) Full compliance with approved authority/Construction drawings. Approved
 2) Shop drawing to be submitted for the engineer approval. Approved as Noted
 3) Material & Technical data sheet to be submitted for approval. Not Approved

For the Consultant: Name: ANAS ALRABIE Signature: *[Signature]* Date: _____

Received by: _____ Distribution: CM TM QA/QC ELEC MECH Subcon

ARKIPLAN

ACC ARABIAN CONSTRUCTION CO.		Emirates Pearl for Development & Investment LLC		EMIRATES PEARL HOTEL																													
TECHNICAL SUBMITTAL FORM																																	
Form No. 1-6-A	Submittal No. 010753	DATE: 23-Jan-12	PROJECT: RECENT EMIRATES PEARL	DISCIPLINE: STRUCTURE	UNIT: 1																												
FROM: ARABIAN CONSTRUCTION CO. LLC. P.O. BOX 2113 ABU DHABI, U.A.E.	TO: ARKAN P.O. BOX 7673 ABU DHABI, U.A.E.	09 JAN 2012	RECEIVED	REVISION: 1	CODE: D																												
DOCUMENT NO. & DESCRIPTION																																	
Discipline: <input checked="" type="checkbox"/> Architectural <input type="checkbox"/> Civil / Structural <input type="checkbox"/> Mechanical <input type="checkbox"/> Electrical <input type="checkbox"/> Others	08410	PW	0031	PQ	029000																												
SUBJECT: Pre-qualification Document of M/s Techno Steel																																	
Sub-contractor: Aluminium & Light Industries Co. (ALICO) Ltd.																																	
Manufacturer: Techno Steel																																	
Supplier: Techno Steel																																	
Area of Use: Project Wide																																	
CONTENTS: See attached Table of Contents																																	
NOTE: M/s Techno Steel will provide Steel Structure related to Façade Works																																	
CONTRACTOR																																	
Quantity: 1-ARKAN	Structural Manager: Name: Ahmed Maguay Date: 23-01-12	Engineering Manager: Name: Yasser Bawazir Date: 23-01-12	Proj. Quality Manager: Name: Maged Elwan Date: 23-01-12	Project Manager: Name: Maged Rofiq Date: 23-01-12																													
ENGINEER'S COMMENT: 1. Subject to satisfactory performance and strict compliance with project specifications. 2. Method of statement to be submitted to include explicit configurations (arrived by certified testing laboratories).																																	
SIGNATURE: _____ DATE: _____		<table border="1" style="width: 100%; border-collapse: collapse;"> <tr> <th colspan="2">ACC ARABIAN CONSTRUCTION CO.</th> <th colspan="2">RECENT EMIRATES PEARL</th> </tr> <tr> <td>DESIGN</td> <td>ACT</td> <td>REV</td> <td>ACT</td> </tr> <tr> <td>COM</td> <td>COM</td> <td>FE</td> <td>FE</td> </tr> <tr> <td>STRU</td> <td>STRU</td> <td>SAFETY</td> <td>SAFETY</td> </tr> <tr> <td>M.E</td> <td>M.E</td> <td>LOGISTIC</td> <td>LOGISTIC</td> </tr> <tr> <td>MECH</td> <td>MECH</td> <td>ADMIN</td> <td>ADMIN</td> </tr> <tr> <td>OTHERS</td> <td>OTHERS</td> <td></td> <td></td> </tr> </table>				ACC ARABIAN CONSTRUCTION CO.		RECENT EMIRATES PEARL		DESIGN	ACT	REV	ACT	COM	COM	FE	FE	STRU	STRU	SAFETY	SAFETY	M.E	M.E	LOGISTIC	LOGISTIC	MECH	MECH	ADMIN	ADMIN	OTHERS	OTHERS		
ACC ARABIAN CONSTRUCTION CO.		RECENT EMIRATES PEARL																															
DESIGN	ACT	REV	ACT																														
COM	COM	FE	FE																														
STRU	STRU	SAFETY	SAFETY																														
M.E	M.E	LOGISTIC	LOGISTIC																														
MECH	MECH	ADMIN	ADMIN																														
OTHERS	OTHERS																																
APPROVED AS NOTED																																	
APPROVAL STATUS: <input checked="" type="checkbox"/> APPROVED <input type="checkbox"/> NOT APPROVED																																	
DATE: 23-01-12																																	
THIS APPROVAL IS NOT VALID IF NOT SIGNED BY PROJECT MANAGER																																	
DATE RECEIVED: _____																																	

ARKAN

PREVIOUS APPROVAL FROM CONSULTANT

Consultant LACASA Architects & Engineering Consultant P.O. Box 122883-Dubai, UAE Tel: 04-473467 Fax: 04-473468		Client NAMAA PROPERTIES HOLDING COMPANY LLC		Contractor 											
SUBMITTAL TRANSMITTAL SHEET #				3005											
Project Name PARAMOUNT TOWER HOTEL & RESIDENCES 3B+G+10P+54+R ON PLOT NO. 345-124 AT BUSINESS BAY, DUBAI UAE			Project No.	P-026-2010											
Submittal No. PDH-099			Revision:	0											
Submittal Title: Pre-Qualification for M/s. Techno Steel for Steel Structural work															
We are sending herewith under separate cover the drawings / documents / samples listed below:															
ITEM NO.	DWG'S / SPEC'S / BOQ REF.	DESCRIPTION	TYPE	COPIES	REMARKS										
Proposed		Pre-Qualification for M/s. Techno Steel for Steel Structural work of the Roof Crown.	OT	2 SETS + CD SOFT COPY	STR										
Specified	N/A														
Location of Use		Structural Steel - Roof Crown													
Reason of Alternative	NA														
Specification or Drawing		05 10 00 Structural Steel													
NOTE: (S) Shop Drawings, (M) Sample, (G) Guarantee, (M) Manufacturer's Data, (C) Certificates, (T) Test Results, (O) Other															
Supplier / Manufacturer: M/s. Techno Steel															
We certify that the documents / materials submitted herewith have been reviewed in detail and are in strict conformance with the contract drawings and specifications except as otherwise stated.															
Contractor Name: Hesham Abdel El Naser (Contractor's Representative) CSCEC		Signature: 		Rev'd By: Date:											
Resident Engineer Review Comments Refer to the attached comment sheet.															
<table border="1"> <tr> <th colspan="2">Consultant Decision</th> </tr> <tr> <td><input type="checkbox"/></td> <td>(A) Approved Work may proceed</td> </tr> <tr> <td><input checked="" type="checkbox"/></td> <td>(B) Approved As Noted work may proceed, but require:</td> </tr> <tr> <td><input type="checkbox"/></td> <td>(C) Not Approved Work may not proceed, Revise and Resubmit.</td> </tr> <tr> <td><input type="checkbox"/></td> <td>(D) Not Required For information only.</td> </tr> </table>						Consultant Decision		<input type="checkbox"/>	(A) Approved Work may proceed	<input checked="" type="checkbox"/>	(B) Approved As Noted work may proceed, but require:	<input type="checkbox"/>	(C) Not Approved Work may not proceed, Revise and Resubmit.	<input type="checkbox"/>	(D) Not Required For information only.
Consultant Decision															
<input type="checkbox"/>	(A) Approved Work may proceed														
<input checked="" type="checkbox"/>	(B) Approved As Noted work may proceed, but require:														
<input type="checkbox"/>	(C) Not Approved Work may not proceed, Revise and Resubmit.														
<input type="checkbox"/>	(D) Not Required For information only.														
Resident Consultant (Name): Mr. Mohamed Said - Project Manager M/s. LACASA		Signature: 		Rev'd By: Date:											
<small>Conditions or comments made relative to submittals during this review do not relieve the Contractor from compliance with the requirements of the Contract. This check is only for review of general conformance with the design concept of the project and general compliance with the information given in the contract documents. The contractor is responsible for confirming and carrying out the quantities, dimensions, selecting fabrication processes and techniques of construction, coordinating its work with that of other trades and performing the installation in a safe and satisfactory manner.</small>															
Copy to: Head Office		Other		Sheet No. 01 of 01											

LACASA ARCHITECTS AND ENGINEERING CONSULTANT



APPROVAL OF SUPPLIER / SUB-CONTRACTOR

Project Name: Type+Mech+	Construction of 5 Star Hotel (4B+G+M+4P+19 Roof) on Plot # 345-420 at Burj Khalifa Area, Dubai for M/s. Maryland International FZE		Project Code: Job # 257
Plot No / Location:	345-420 at Burj Khalifa Area - Dubai		Date: 29/03/2018
Main Contractor: M/s. United Engineering Construction L.L.C (UNEC)			Ref. No: UNEC/J-257/PR-TECHNO/015-Rev-0
Sub-Agency: M/s. Techno Steel			
Department:	<input type="checkbox"/> Architectural <input type="checkbox"/> Civil <input type="checkbox"/> Electrical <input type="checkbox"/> Mechanical <input type="checkbox"/> Structural		
Work Description:	Prequalification for Techno Steel		
S.No.	NEB Specified Sub-Agency	Same As Specified	Alternative Proposed Sub-Contractor
Enclosure: 02 Set of Prequalification Submittal (Hard Copies)			
Reason for Alternation:			
Submitted by:	M/s. Techno Steel	Signature:	Date: 29/03/2018
Main Contractor:	M/s. UNEC	Signature:	Date: 29/03/2018
Received by:	Consultant (NEB)	Signature:	Date:

BELOW PORTION FOR NEB USE ONLY

Status:	<input type="checkbox"/> Approved <input checked="" type="checkbox"/> Approved as noted <input type="checkbox"/> Resubmit <input type="checkbox"/> Rejected		
Comments by NEB (SP27):	No objection subject to: ① subject the performance at site ② provide Approved Design Form D.M		
Signed By: (Name)	Signature:	Date: 29-03-2018	
Client Approval: (Name)	Signature:	Date:	
Comments:			
Received by Main Contractor:	Signature:	Date: 29/03/2018	

Clearing of above named documents is 14 days from submission date as per NEB requirements

NATIONAL ENGINEERING BUREAU (NEB)

PREVIOUS APPROVAL FROM CONSULTANT

THE FERN LIMITED

EDMAC ENGINEERING CONSULTANT

RMB GBH INTERNATIONAL CONTRACTING L.L.C.

Under Construction of Proposed Residential/ Commercial Building 2B+G+P+13+Roof Floor on Plot AFMU004B at Al Furjan Dubai UAE.

RECEIVED

19 DEC 2019

M/s. GBH INTERNATIONAL CONTRACTING L.L.C.

EDMAC Engineering Consultants

WE ARE SENDING HEREWITH PRE-QUALIFICATION

SI.No	Submittal No	QTY	DESCRIPTION	TYPE	CODE
					Submittal/Action
	PQD/CIV/090-R02	3	Pre-Qualification for Steel Structural Roof Canopy	Documents (Hard Copy 3 set) + Soft Copy - 1 CD	1
			Subcontractor : M/s. Techno Steel Construction LLC		
			Contact Person Name: Mr. Hareesh, Mob.No.0566813436		

Programme of Work Activity ID Ref: Programme of Work Descriptio

Signature of Contractor: Vinod Kumar Bhardvaj (P.M)

Received by Consultant

CONSULTANT'S COMMENTS

→ This approval subject to following conditions
 → Subject to M/s Taskless approval
 → Submit Shop Drawing as agreed
 → Submit DM NCC, if required
 → Submit Undertaking letter from Subcontractor
 → Submit Design calculation
 → Submit Taskless Subcontractor's Accountation card. All other documents required.

Signed By: Resident Engineer: For EDMAC Engineering Consultants

Date: 19/12/19

Received by Contractor

EDMAC ENGINEERING CONSULTANT

Expo Live Exhibition Fitout & Satellites

DAR AL OMRAN

ALEC FITOUT

Pre-Qualification Submittal

PRE-QUALIFICATION FOR TECHNO STEEL CONSTRUCTION

SA1189-PRF-5491-FO-000003(1)

EMPLOYER : EXPO DUBAI 2020
 PROJECT MANAGEMENT : CH2M MACE
 CONSULTANT : DAR AL OMRAN
 CONTRACTOR : ALEC FITOUT
 PROJECT : CFC-359 Expo Live
 SUBCONTRACTOR : TECHNO STEEL CONSTRUCTION
 DATE OF SUBMISSION : 14-April-2021

ALEC FITOUT

Checked By	Name	Role	Signature
	Pradeep Jacob	Sr. QA/QC Engineer	

ENGINEER'S COMMENTS / SIGNATURE

1-Contractor to comply with all HSE requirements and Authority regulations.
 2-Obtain all necessary approval prior to proceed with the activity at site.
 3-All licenses, certificates and insurances to remain valid through the duration of the project. Any new / updated licenses, certificates and insurances are to be shared with the Employer and Engineer.
 4-Ensure all Fabrications shall be in accordance with the approved shop drawings.
 5-Provide a program for this specific package to include design, engineering, material procurement, delivery and installation as a minimum.
 6-Provide manpower and plant/equipment requirements for the scope of work.

Document Approval Status:

Approved
 Approved with Comments (Refer to Engineer's Comments above)
 Rejected

DAR AL OMRAN Engineering Consultants Expo 2020-Project-Sites

Tilhad Rabah
Resident Engineer

DAR AL OMRAN

PREVIOUS APPROVAL FROM CONSULTANT

ORIGINAL

DAMAC **KEO** **TAV Construction**

SITE TRANSMITTAL of Materials TRANSMITTAL NO.: DTP-TAV-KEO-MD-A-0458
REV: 0

To: KEO International Consultants

PROJECT: DAMAC Towers by Paramount
SUBJECT: 28-48P/48-58Rk Floors
OWNER: Damac Star Properties LLC
CONTRACTOR: TAV Construction

WE ARE SENDING HERewith THE DRAWINGS / DOCUMENTS / SAMPLES LISTED BELOW FOR YOUR REVIEW:

ITEM NO.	SPEC. OR BOX REF.	GENERAL DESCRIPTION AND REVISION DETAILS	TYPE (I)	COPIES	ACTION CODE (I)
1		Material Submittal for Steel Fabrication @ Roof Crown Steel Features of M/s Cladtech *** nothing follows ***	MD	2	B

We certify that the items submitted herewith have been reviewed in detail and are in strict conformance with the Contract Drawings and Specifications as per the reference sheet.

CONTRACTOR: TAV Construction
DATE: 21-May-2015

RECEIVED BY: KEO International Consultants
DATE: 21 MAY 2015

KEO'S REMARKS:
No objection subject to full compliance with project specifications/requirements.

CONCORDS or comments made relative to submittals during this review does not relieve the contractor from compliance with the requirements of his Contract, information given in the Contract documents. The contractor remains responsible, among other things, for the design of the project or such parts of the project he has design responsibility for (of design forms part of the Contract), for confirming and controlling all quantities and dimensions, selecting fabrication processes and techniques of construction, coordinating the work with that of other trades, and performing his work in a safe and satisfactory manner, all in accordance with the Contract.

KEO CM / RE: [Signature]
DATE: 20/05/15

RECEIVED BY TAV Construction:
DATE: [Signature]

(I) TYPE: SD: Shop Drawings
SM: Samples
QT: Questionnaire
MD: Manufacturer's Data
CT: Certificate
OT: Others
TR: Test Results

(II) ACTION CODE:
A: No objection
B: No objection subject to incorporation of all comments and remarks
C: Rejected, to be resubmitted

30 MAY 2015

P348-CTI-MAT-050 (0)

MATERIAL APPROVAL FORM

INDEPENDENT ENGINEER: KEO Consultants
CONTRACTOR: TAV Construction

Submission to QA/QC by:
MOHAMMAD SULEIMAN
QHSE MANAGER - CTI

Date: 13-May-15
Signatures: [Signature]

Any Other Approval (if necessary):

Date: _____ Signatures: _____

CIVIL (C) ARCHITECTURAL (A)
 MECHANICAL (M) ELECTRICAL (E)
 IT (I) CONVEYING (C)
 OTHERS (O)

SPEC'S REF.: Facade Specification by Monhardt (SFD 274-TD-SPE-001) / Pages: 111-112 WBS NO.:

MATERIAL: Steel Fabrication @ Roof Crown Steel Features

PROPOSED AREA OF USAGE: STEEL FABRICATOR

MANUFACTURER NAME & ADDRESS: TECHNO STEEL Construction LLC

SUPPLIER NAME & ADDRESS: TECHNO STEEL Construction LLC

ENCLOSED:
 Response to Consultant's Comments
 Reference Drawing
 Samples
 Compliance Statement
 Certified Approvals
 Product Data
 Company Profile / Pre-Qualification

KEO INTERNATIONAL CONSULTANTS

ORIGINAL

WOW DUBAI

PROJECT NAME: WOW Hotel and Hotel Apartments
PLOT NO. 148888, Business Bay, Dubai
OWNER: WOW
CONTRACTOR: GUNAL Construction

PRE-QUALIFICATION STRUCTURAL

To: NEXT Engineering Consultants
TRANSMITTAL NO.: WOW-GUNL-SKT-PQ 0 0014
NEW SUBMITTAL
REVISION: 0
DATE: 6-Nov-2018

WE ARE SENDING HERewith THE DRAWINGS / DOCUMENTS / SAMPLES LISTED BELOW FOR YOUR REVIEW:

ITEM NO.	SECTION SPEC. OR BOX REF.	GENERAL DESCRIPTION AND REVISION DETAILS	TYPE*	QTY	ACTION CODE**
1	05 12 00	Pre-Qualification Document for Roof Steel Structure Roof of M/s Techno Steel *** nothing follows ***	PQ	3 HD/ CD	13

We certify that the items submitted herewith have been reviewed in detail and are in strict conformance with the Contract Drawings and Specifications as per the reference sheet.

CONTRACTOR: GUNAL Construction
DATE: 6 Nov 2018

RECEIVED BY: NEXT Engineering Consultants
DATE: 06/11/2018

NEXT'S REMARKS:
No objection to appoint M/s Techno Steel for the roof steel structure works; Subject to successful submission and approval of the design by DM. Provide commercial tickets.

CONCORDS or comments made relative to submittals during this review does not relieve the contractor from compliance with the requirements of his Contract, information given in the Contract documents. The contractor remains responsible, among other things, for the design of the project or such parts of the project he has design responsibility for (of design forms part of the Contract), for confirming and controlling all quantities and dimensions, selecting fabrication processes and techniques of construction, coordinating the work with that of other trades, and performing his work in a safe and satisfactory manner, all in accordance with the Contract.

NEXT Engineering Consultants CM / RE: [Signature]
DATE: 14/11/2018

RECEIVED BY: GUNAL Construction
DATE: 14 NOV 2018

(I) TYPE: SD: Shop Drawings
SM: Manufacturer's Data
QT: Questionnaire
MD: Samples
CT: Certificate
OT: Others
TR: Test Results

(II) ACTION CODE:
A: No objection
B: No objection subject to incorporation of all comments and remarks
C: Rejected and Resubmitted
D: Rejected

NEXT ENGINEERING CONSULTANTS

PREVIOUS APPROVAL FROM CONSULTANT

SUBCONTRACTOR APPROVAL APPLICATION (SCA)			
Employer: Dubai Int'l Real Estate	Engineer: Kling Consult – Kieferle & Partner	Contractor: HLC HADDOOR LEIGHTON Al Habtoor Leighton LLC	
Project: Jewel of the Creek Development on plot 129 – 104 Port Saeed, Dubai / UAE			
Package # 8 for (5) Hospitality Buildings, Basements, Ballroom, Marina and External Works			
SCA Ref. 0008	Rev:00	Date: 7 April 2016	
Discipline	<input checked="" type="checkbox"/> Structural	<input type="checkbox"/> Architectural	<input type="checkbox"/> MEP
Sub-contractor's Name:	Techno Steel LLC	As Specified:	<input checked="" type="checkbox"/> Yes
Trade License No:	228408	Expiry Date:	5 July 2016
Sub-contractor's Address & Contact No:	P.O.Box :- 21687 , Dubai , UAE Tel. +97148015400 Fax. +97148830408		
Description of the Work	Structural steel works in building, Space frame metal fabricator , metal stairs, ladder Railings.		
Specification Reference	Section:- 05100, 05400, 05500, 05510		
Attachments	Prequalification Documents		
Contractor's Rep.:	Rachad Chehab – Project Director	Signature:	Date: 7 April 2016
Application Received By the Engineer	Signature:	Date: 7 April 2016	
Engineer's Comments:	<p>* Company profile is accepted with attached certifications</p> <p>* The company must fulfill the project specs & adopted codes in design & construction works.</p> <p>* The company must fulfill DM & Third Party requests in (Design Works).</p>		
<input type="checkbox"/> Accepted	<input checked="" type="checkbox"/> Accepted with the above Comments	<input type="checkbox"/> Rejected	
Commented By:	KLING CONSULT	Signature:	Date:
Engineer's Rep.:	7405 JEWEL OF THE CREEK	Signature:	Date: 19/4/16
Engineer's Response Received By the Contractor	Signature:	Date:	

HLG/831/FM/024 Rev.01 July 2014

19 APR 2016
JOC-SITE 631

KLING CONSULT – KIEFERLE & PARTNER

PROJECT: DH-0036 - BEACH FRONT TOWER AT JBR (LA VIE) ON PLOT NO. 3926529, DUBAI, UAE				
CLIENT REP.	CONSULTANT	CONTRACTOR		
NORTH25 DEVELOPMENT LLC.	NEXT ENGINEERING CONSULTANTS	AL SAHEL CONTRACTING CO. LLC.		
REF. NO. J256/MSCC/CIV/PQD/031	SUBCONTRACTOR / SUPPLIER SUBMITTAL			DATE 26-May-21
Supplier / Subcontractor	Attachments	B.O.Q	Reference	Specifications
Subcontractor for Structural steel works	Prequalification	<input checked="" type="checkbox"/>	-	Section:051200
	Scope of works	<input checked="" type="checkbox"/>	-	-
	Drawings	<input checked="" type="checkbox"/>	-	-
	-	-	At place	Use
-	-	G&R Roof	For purpose	Roof Canopy, entrance Guard canopy, Beach club entry canopy, Main entrance Canopy, Beach club canopy & beach portal
Subcontractor / Manufacturer	Material	Alternative proposal	Reason	Submitter Stamp (Sub-Contractor)
Techno steel	-	-	-	-
Contractor's Stamp & Sign	Approval Requested by (date)	Consultant's Receipt Date & Sign		
JIMMY DIAMANTE PROJECT MANAGER (SR.)				Received Stamp (Consultant)
For Consultant's use				
<input checked="" type="checkbox"/> Approved Subject to WB/N25 approval <input type="checkbox"/> Revise and Re-submit				
1- Contractor to comply with project specification and authority standards				
2- Contractor to provide DCL/DCCD certificates				
3- Contractor to ensure renewal of Dubai Trade license during project execution duration				
4- Contractor to follow approved GHSE plan and authority regulations				
5- Subject to factory visit and previous completed projects				
6- Contractor to submit shop drawings, MOS and material submittals for Engineer approval				
				Reply Stamp (Consultant)
				Received Stamp & Sign (Contractor)
AL SAHEL CONTRACTING CO. (P.S.C.) Sign upon Filing (Project Engineer)		Sign & Stamp (E.P Representative)		Sign & Date (Consultant)
Note: Approval without which payment may not be released				

RECEIVED

NEXT ENGINEERING CONSULTANT

LIST OF CLIENTS

SN	CLIENTS
1	AAFAQ ENGINEERING
2	ABBAR & ZAINY
3	ABDUL AZIZ KHALIFA
4	ABDUL GHANI
5	ABDUL RAHIM ARCHITECTURAL
6	ABDUL SALAM
7	ABDULLA AL SUWEIDI
8	ABDULLA GHOBASH
9	ABDULRAHMAN JABER BELSHALAT
10	ABDULRAHMAN MOHD TAHER MOHD WALI
11	ABNA AL AMIR CONTRACTING
12	ABU DHABI INTERNATIONAL AIRPORT
13	ACICO
14	ADNAN OILFIELD
15	ADNAN SAFFARINI
16	ADNOC ONSHORE
17	ADWAR ENGINEERING
18	AECOM
19	AEROVENT MIDDLE EAST
20	AHMAD ALSUWAIDI BUILDING CONTRACTING
21	AHMED ABDUL RAHMAN F.
22	AHMED AL BANNA
23	AIC CONTRACTING
24	AISHA ALI
25	AJZ ENGINEERING
26	AL AJMI ENGINEERING
27	AL AMANI ALUMINUM & GLASS
28	AL ANDULUS HOSPITAL
29	AL ARIF CONTRACTING CO.
30	AL ASRI ENGG. CONSULTANT
31	AL ATTAR GROUP
32	AL ATTAR GROUP (AHMAD ABDUL RAHMIM AL ATTAR)
33	AL AWQAF & ISLAMIC AFFAIRS
34	AL AYALI CONTRACTING
35	AL BADR CONTRACTING CO.
36	AL BANNA
37	AL BUSTAN
38	AL DAYER UNITED CO.
39	AL EMARAH
40	AL FARIS INTERNATIONAL HEAVY
41	AL FARIS LAND TRANSPORT
42	AL FATTAN
43	AL FUTTAIM & SONS
44	AL GHURAIR CONSTRUCTION
45	AL HABBAI CONTRACTING
46	AL HABTOOR GROUP LC
47	AL HAKAM
48	AL HAMED DEVELOPMENT
49	AL HAMOOD BLDG. CONT.
50	AL HOSNEI CONTRACTING

SN	CLIENTS
51	AL HUDA CONTRACTING
52	AL HUDAIBA CONTRACTING LLC
53	AL INJAZ CONTRACTING CO.
54	AL JAZEERA FACTORY
55	AL MALIK BUILDING CONTRACTING CO. LLC
56	AL MASAR CONTRACTING
57	AL MAZROUEI BOWYER BLDG (AMBB)
58	AL MOHIT CONSULTANT
59	AL MOOSA CONTRACTING
60	AL MUSTAQBEL AL SAEED CO
61	AL NABOODAH CONTRACTING
62	AL NEKHREH CONTRACTING
63	AL OROBA CONTRACTING
64	AL RAMS CONTRACTING
65	AL RASHAD CONTRACTING
66	AL REHAB PERFUMES
67	AL ROSTAMANI
68	AL ROSTAMANI PEGEL
69	AL SAFA CONTRACTING
70	AL SAHEL CONTRACTING
71	AL SAHR CONTRACTING
72	AL SHABAB AL ARABI CLUB
73	AL SHAFAR CIVIL ENGINEERING
74	AL SHAFAR CONTRACTING
75	AL SHAFAR GEN. CONTR.
76	AL SHAFAR NATIONAL
77	AL SHAFAR TRANS.&CONTR.
78	AL SHAMIL CONTRACTING
79	AL SHEIKHA RAWDHA BINT AHMED BIN AL MAKTOUM
80	AL SHUROOQ CONTRACTING
81	AL SULTAN ELECTROMECH
82	AL TURATH AL ASEEL
83	AL WALEED REAL ESTATE
84	AL ZAMALEK
85	AL ZAROUNI CONSTRUCTION
86	ALB ME
87	ALEC ENGINEERING AND CONTRACTING LLC
88	ALEC FITOUT
89	ALI HAJI ABDULLA AWAZI G.
90	ALL CLAD SEACO MIDDLE EAST
91	ALUMINUM & LIGHT IND. CO.
92	ANC CONTRACTING
93	ARAB AMERICAN COSMETIC
94	ARAB EXPERTS
95	ARABIAN ALUMINUM CO.
96	ARABIAN CONSTRUCTION
97	ARABTEC CONSTRUCTION LLC
98	ARIF AND BINTOAK
99	ARMADA
100	AROMA INTL BLDG. CONT.

LIST OF CLIENTS

SN	CLIENTS
101	ASCON
102	ASWAAQ RETAIL LLC
103	AWQAF & ISLAMIC AFFAIRS
104	BA YOUSUF TRANSPORT
105	BANDO ENGINEERING CONS.
106	BANK MELLI IRAN
107	BARTAWI GENERAL
108	BECON CONSTRUCTION CO.
109	BELHASA SIX CONSTRUCT
110	BIC CONTRACTING
111	BIN DALMOUK CONSULTANT
112	BIN LADIN CONTRACTING
113	BIN LAHEJ ALUMINIUM LLC
114	BIN SHABIB CONTRACTING
115	BIN ZAYED CONTRACTING
116	BU HALEEBA - ACADEMIC CITY
117	BUSET CONTRACTING
118	CANAM ASIA
119	CARBON GENERAL CONTRACTING
120	CHICAGO MAINTENANCE
121	CHINA RAILWAY 18TH BUREAU GROUP L.L.C
122	CHINA STATE CONSTRUCTION
123	CHIRAG CONTRACTING
124	CISART GROUP
125	CITY ENGINEERING
126	CIVIC BUILDER
127	CK ARCHITECTURE INTERIORS LLC
128	CLADTECH INTERNATIONAL
129	CLOISALL CO. LLC
130	CONDOR BLDG. MATERIAL
131	CONDOR BLDG. MATERIAL
132	CONDOR BLDG. MATERIALS
133	CONDOR BLDG. MATERIALS
134	CONIN
135	CORPORATE TECHNOLOGY
136	DAAR ENGINEERING
137	DAMAC CANAL ONE PROPERTY DEVELOPMENT
138	DAMAC PROPERTIES Co. LLC.
139	DAR AL HAI CONTRACTING
140	DAR CONSULTANT
141	DARWISH
142	DEWA
143	DHABI CONTRACTING
144	DHAFIR DEVELOPMENT
145	DME CABLES
146	DOLPHIN
147	DUBAI ALUMINUM CO. (DUBAI)
148	DUBAI CONSULTANTS
149	DUBAI CONTRACTING COMPANY PSC
150	DUBAI DAWN DISTINGUISHED CONSTRUCTION

SN	CLIENTS
151	DUBAI ELECTRICITY & WATER
152	DUBAI HOSPITAL
153	DUBAI INTERNATIONAL REAL STATE
154	DUBAI MUNICIPALITY
155	DUBAI MUNICIPALITY- GENERAL PROJECTS DEPT.
156	DUBAI POLICE
157	DUBAI TRAILER & CONST. IND.
158	DUBAI WORLD TRADE CENTRE
159	DUBAL
160	DUBARCH CONSULTANT
161	DYNAMIC ELECTROMECH
162	E2C2
163	EAGLE TRADING/BIN DALMOUK
164	EASTERN INTERNATIONAL
165	ECONOMICAL & ENERGY CONSERVATION CONS.(E2C2)
166	EDMAC
167	ELEVATION BUILDING SERVICES LLC
168	EMARAT
169	EMIRATES CONTRACTING CO.
170	EMIRATES POST TENSION
171	ENGG. CONT. CO. (ECC)
172	ENGINEERING CONSTRUCTION AND RECONSTRUCTION
173	ENGINEERING INDUSTRIAL PRODUCTS
174	ESSA HASSAN MUBARAK
175	FAHAD KHALIFA MOHAMMAD HAMAD AL MAZROOEI
176	FAKHREE CENTRE
177	FALASI
178	FALCON CONTRACTING
179	FEDERAL FOOD
180	FINASI
181	FINO INTENATIONAL
182	FIRST ART CONSULTANT
183	FITNESS FOR LIFE
184	FLOAT MIRROR INDUSTRY
185	FREELINE ENGINEERING
186	FREELINE INTERIOR DESIGN
187	FUTURE ENGINEERING
188	FUTURE HORIZON CONTRACTING LLC
189	GALADARI ENGINEERING
190	GARGASH CONSTRUCTION
191	GENERAL CONTG. EST.
192	GHANTOOT GULF CONTRACTING
193	GHANTOOT TRANSPORT &
194	GINCO CONTG - SHJ
195	GINCO CONTRACTING
196	GLOBAL PIPING MATERIALS
197	GLOBAL VISION
198	GOLBAFT GULF CO.
199	GOLDEN NEON
200	GREEN STYLE

LIST OF CLIENTS

SN	CLIENTS
201	GULF ASIA CONTRACTING LLC
202	GUNAL
203	HENNESSEY
204	HEPHER QUANTITY SURVEYOR
205	HIPCO ALUMINUM & GLASS
206	IEMS ELECTRO MECHANICAL SERVICES
207	IMAGE ARCHITECTS
208	IMAGE CONSULTANTS
209	INTERMASS ENGG & CONTG.
210	INTERNATIONAL CITY LLC
211	INTERNATIONAL HOSPITAL CONST. CO. LTD - DUBAI
212	INTERSUN
213	IPARK (Interligent Parking & Elevator Co. LLC)
214	IRANIAN HOSPITAL
215	IRCAST SCHAUBENBERG
216	IRH-RAHIM
217	J& H EMIRATES LLC
218	JASAF
219	JERNAS CONTRACTING
220	JOHN ALUMINUM & GLASS
221	JOSEPH ADVERTISER
222	JOTON POWDER COATING
223	JT METRO JV
224	KCE - JUMA AL MAJID
225	KHALIFA MOHD. BAKHIT AL
226	LA PREMIERE CONTRACTING
227	LIEBHERR
228	LIFT MART ELEVATORS & ESCALATORS
229	LINDNER STEEL & GLASS
230	LOOTAH CONTRACTING
231	MARYLAND INTERNATIONAL
232	MAZAYA METAL CONSTR.
233	MEECON
234	MEYDAN GROUP LLC
235	MIDDLE EAST STATIONERY
236	MILLENNIUM PROJ. MNGT.
237	MINISTRY OF AWQAF
238	MOHAMED ABDULRAHMAN AL BAHAR
239	MOHAMMAD ALI KASAB
240	MOHAMMAD MAHMOUD BIN ESSA
241	MOHD. AL BANNA
242	MOHD. ALI SEMSAR
243	MOMENT METAL
244	MUHAIDEB TRADING
245	MZOOM BUILDING CONTRACTING
246	NARESCO CONTRACTING LLC
247	NATIONAL ALUMINIUM & STEEL
248	NATIONAL ENGG. CONT.
249	NATIONAL ENGINEERING BUREAU
250	NEO SOLUTIONS

SN	CLIENTS
251	NOBLE DESIGN SOLUTIONS
252	OMAR GHALEB
253	OMNIX INTERNATIONAL
254	ORIENTALS SPECIALIST LIFTING
255	OSE INDUSTRIES
256	OSMAN AUDEH
257	OST CONSTRUCTIONAL
258	OTHMAN SHARIFF
259	PALM JUMEIRAH MONORAIL
260	PARDISAN STAR
261	PARKWAY INTERNATIONAL CONTRACTING L.L.C
262	PENGUIN CONTRACTING
263	PERI LLC
264	PETRA PROJECT MANAGEMENT
265	PIONEERS OF EXPERTS
266	RAHIM CONSULTANT
267	RAMESH & ASSOCIATES
268	RELIABLE FABRICATOR & M/S COMMODITY TRADING
269	RENDERS ENGG. CONSLT.
270	ROBUST CONTRACTING
271	ROSHAN CONTRACTING
272	ROTANA CONTRACTING
273	ROYAL UNITED
274	ROYAL WORLD GLASS
275	RP GLOBAL
276	S. MOKBEL & PARTNERS
277	S.S. LOOTAH CONTRACTING
278	SAEED AL HILLI
279	SAIFEE CONTRACTING
280	SALIHEEN CONSTRUCTION
281	SARCO
282	SARNAR
283	SAUD SHEHATHA CONSTRUCTION
284	SBME
285	SCHAUBENBERG
286	SEEMA ALUMINIUM WORKS
287	SEIFCO CONTRACTING
288	SILVER CROWN PROPERTIES DEVELOPMENT
289	SOMAR ALUMINUM (SAMCO)
290	SPACE CONSULT (BINHAM GROUP)
291	SPARK CONTRACTING
292	SPECIALIST CLINIC
293	STEEL FAB
294	STRUCTURFLEX MIDDLE EAST CONTRACTING
295	SULIMAN AL QADEEBI & SONS
296	SULIRAN CORPORATION
297	SULTAN DÉCOR
298	SUMER CONTRACTING
299	SUN ENGG. & CONTR. CO.
300	SUPERIOR STEEL & WELDING WORKS

LIST OF CLIENTS

SN	CLIENTS
301	TAIF AL EMIRATES
302	TARIQ GARGASH
303	TASAMEEM STX
304	TAV CONSTRUCTIONS
305	TAWEELAH ALUMINUM EXTRUSION COMPANY CO.LLC (TALEX)
306	TE SOLUTION
307	TECH INTERIOR
308	TELECOMMUNICATIONS REGULATIONS AUTHORITY - TRA
309	THOMAS BENETT GULF
310	TIANJIN CONTRACTING
311	TIGER CONTRACTING
312	TODAY ENGG. CONSULTANT
313	TODAY ENGINEERING
314	TRADE ENGINEERING
315	TRANSEMIRATES CONTR. CO.
316	TRANSFIELD
317	UNION INDUSTRIES
318	UNION PAPER MILLS
319	UNITED ENGINEERING CONSTRUCTION
320	VALI CONTRACTING
321	WILLIAN HARE
322	WORLD WIDE POWER SERVICES
323	WORLD WIDE REAL ESTATE
324	WS ATKINS
325	WURTH GULF / WINNER CONSULTANTS
326	X-ARCHITECTS
327	YOUSEF LOOTAH CONTRACTING
328	ZEBIAN ALUMINUM & GLASS IND.

CLOSING REMARKS

تكنوستيل للإنشاءات ذ. م. م.



TECHNOSTEEL CONSTRUCTION L.L.C.

In the objective to carry-out excellent and quality services, **Technosteel Construction L.L.C** strived for 33 years in the building industry to cater **diversified, complicated and state-of-the-art steel structures** to its customers. Though competency has been proven from its massive experience, still **Technosteel Construction L.L.C** has constantly been aiming on improving their services by expanding capabilities and stepping up its resources and manpower.

Technosteel Construction L.L.C 's **credentials** and **experience in steel industry** speaks for themselves, TSC will help you design and build a **safe with outstanding quality steel structure** through its competent and skilled workforce.

Through its 33 years in existence, **Technosteel Construction L.L.C** has earned the respect and loyalty of their **repeated clients** such as government authorities, Dubai Police, private customers and many others through the quality of the products being offered and delivered as well as its transparency and reliability in its business.

Technosteel Construction L.L.C will efficiently deliver you the best of works and guarantees you the best service in the industry for the successful completion of your project.

Technosteel Construction L.L.C is aiming and looking forward on working with you.

Should you need our services, kindly reach us through:

Tel. No. : 04-8015400

E-mail: tsc@technosteel-uae.com / estimation@technosteel-uae.com